

ISSUE 81 SPRING 2021

WWW.HEDGEEND-TC.GOV.UK

# GAZETTE

FREE

**HEDGE·END**  
TOWN COUNCIL

CRANBOURNE  
PARK

WINDY COUSE  
ROAD

School

HOME FARM WOODLAND TRANSFERS TO COUNCIL  
BOWLING GREEN AVAILABLE FOR ALL  
SPRINGTIME AT WILDERN LOCAL NATURE RESERVE



# HEDGE END TOWN COUNCILLORS



**Wildern**

Margaret Allingham  
01489 798646



**St Johns**

Sheila Baynes  
01489 690126



**Berrywood**

George Brown  
07841 685044



**St Helens**

**Chair: H & P\***  
Paul Carnell  
01489 785216



**Berrywood**

Ian Corben  
07561 343858



**Freegrounds**

Helen Corben  
01489 692406



**Dodwell**

Tonia Craig  
02380 404680



**St Helens**

Cynthia Garton  
01489 797213



**Freegrounds**

**Chair: Personnel & Strategy Committee**  
Keith House  
07768 357918



**Wildern**

Patricia Jenkins  
01489 786265



**Wildern**

**Vice Chair of Council**  
John Jupe  
01489 780293



**Shamblehurst**

**Chair of Council**  
Lucy Jurd  
07730 072606



**Station**

David Kinloch  
07875 232557



**Berrywood**

Rupert Kyrle  
02380 407045



**Station**

James Mitchell  
0800 316 3435



**Wellstead**

Cliff Morris  
07848 946822



**Shamblehurst**

Ron Nichols  
07981 852901



**Station**

**Chair: P & R\***  
Derek Pretty  
01489 797213

**P & R\*** = Policy & Resources Committee

**R & A\*** = Recreation & Amenities Committee

**H & P\*** = Highways & Planning Committee



**St Helens**

John Shepherd  
01489 692597



**Wellstead**

Anne Small  
07900 255518



**St Johns**

Ben Thomas  
01489 790701



**St Johns**

**Chair: R & A\***  
Jane Welsh  
01489 784962

(Email: [Firstname.Lastname@hedgeend-tc.gov.uk](mailto:Firstname.Lastname@hedgeend-tc.gov.uk))

# A Note From...The Chair

Well another year has passed and for many of us it has been a blur of home working, home schooling and generally being at home. These have been difficult circumstances for those of us fortunate enough to have a stable environment at home, but let us spare a thought for those that either don't have a home or have suffered from being at home more often, perhaps because of domestic abuse, mental health or the loss of a loved one during these difficult times.

If you are finding yourself in these difficult circumstances or you know of someone who is, there is support out there for you. You can contact the Town Council who can put you in touch with relevant charities and support groups. We also recognise that people may be struggling financially and need assistance from the Hedge End Food Centre or maybe advice from Citizens Advice based in Dowd's Farm Community Centre. These and other support group information can be found on our website or with a quick call to the office.

The Town Council staff have continued to work throughout ensuring that staff are kept safe and well. Whilst not quite as spectacular as #Handforth, Council meetings can be attended by anyone. If you want to know how your local

council operates or more about the decisions taken then do come along. Dates are available on the back page. Recent meetings have welcomed Sgt. Jackson from the Hedge End Community Policing Team which has been really valuable to understand policing priorities and issues in our area.

This is my final edition of the Gazette as Chair of Council; a new Chair will be elected at the AGM in May (I know I said that last year, but who knew then what we know now). The Annual Parish Assembly (APA) will be my final appointment and an opportunity to hear from other community groups as well as presenting the Serving The Community Awards.

Lastly I would like to say it really is a pleasure to serve as Councillor in Hedge End and whilst I may not be Chair, I will still be your local councillor for all things community in the Shamblehurst Ward. I am passionate about the environment and climate change and will continue to champion this agenda.



**Cllr. Lucy Jurd, Chair of Council**

## The Town Clerk's Desk

I hope you are all keeping safe and well and looking forward to the nicer weather, I know we are at the council. We are also looking forward to welcoming people back to some of the facilities we have been unable to open during the last year. The buildings and sites such as the tennis courts really don't do well being left stood for any length of time.

Although we are holding online meetings it's not quite the same as meeting in person. Business as usual has taken place but you lose the vivacity; the throwaway comment that sparks an idea and the general enthusiasm that is generated in the meetings.

It's difficult to believe that a whole year has passed and we haven't had that in person contact. Depending on future guidance we may see in person meetings return during May/June. We will still need to observe social distancing and are working out a way to manage this safely.

We have still been busy behind the scenes delivering virtual youth clubs and maintaining open spaces as best we can through some awful weather and wet ground.

Litter during this time has increased significantly as more people are using our open spaces so keeping on top of

that has been a challenge in itself. I know many of you have taken to your local areas to do your bit and pick up after those less conscientious, so Thank You if you have.

All of our buildings are being cleaned more frequently and Turnpike Pavilion is being decorated. We're now busy planning activities for youngsters to do at home or in our parks as the weather continues to improve.

During this time, we have also been involved in the legal transfer of Home Farm Woodland to the Town Council (read more about this on page 6), and the EBC planned installation of a new activity trail.

We are working towards ensuring all our services can re-open safely, so we can all enjoy the summer months. Please continue to enjoy the open spaces, parks and facilities run by HETC, and I hope you all keep well and stay safe while the lockdown restrictions are eased.



**Sarah Jelley, Town Clerk**



## Recreation & Amenities Committee

Looking after our green spaces & outdoor facilities

While Spring is known as a time for cleaning, our ground staff have already spent a great deal of time since Winter pruning, tidying and removing debris from our pathways and hedges. It certainly has tidied our areas up which is nice to see.

Unfortunately we still saw some vandalism; we recently painted and improved the front access of our Pavilion in Greta Park, but not long after it was completed, we had to remove a large amount of graffiti from the walls and doors. If you see anyone causing damage or any other anti-social behaviour then please report the matter directly to the Police via 101 or their website [www.hampshire.police.uk](http://www.hampshire.police.uk), and if possible let the Town Council know.

The Allotments are proving very popular; there is currently a waiting list of over 50 so, if you have one and feel you are not able or do not wish to keep it for any reason please let us know. I shall be walking around in early Spring for my

quarterly inspection so if you see me there and have any queries please come and have a chat.

As you know last year we were sadly unable to open our Paddling Pool. However, as long as Government rules and regulations allow, we really hope to open it this year.



As I am writing this, Spring is well under way, so let's hope we have a lovely summer like last year, and even if holidays abroad are not forthcoming this year, we are very lucky to have so many wonderful

parks, green spaces and outdoor recreational facilities throughout Hedge End for us all to enjoy.

**Cllr. Jane Welsh**  
**Chair, Recreation & Amenities Committee**

## Policy & Resources Committee

Looking after our income and expenditure

With reduced income there are a number of projects which we had hoped to undertake this year but will have to be shelved to a future date. The Town Clerk and her staff continue to look for ways to make savings on the expenditure without affecting our core activities.

So, the coming year again looks a financial challenge. As councillors we are all conscious of the situation residents are finding themselves in, perhaps with reduced income or even loss of employment. As a result, we resolved to seek an increased Council Tax precept in line with inflation, which will enable us to maintain our buildings, sports pitches and play areas to the level residents expect.

We also hope that the coming months will enable us to reopen our halls and sports facilities, so long as it is safe to do, and start to recover this lost income.

The important point to remember is that whatever we do, we need to make sure we continue to maintain the highest standards to defeat the virus. Remember: wash hands, protect face and make space.

As we entered 2021, we were again subjected to another 'Lockdown', unable to meet family and friends or take part

in the social activities we have always enjoyed. We have not been able to appreciate the social clubs, gyms, sports or keep fit as before.

Our thanks should be given to our staff who continued to work throughout 2020 and the pandemic to maintain our community buildings, sports pitches and play areas to the high standards that we have set ourselves in the past.

The Town Council finances its activities through a Council Tax precept, which currently is the equivalent of one cup of coffee per band D household per week, and income from sports field and hall hire. Throughout the past year we have seen our income from these sports and hall hire decimated.

Through the previous year we took stringent action to limit our expenditure on works that were considered non-essential. We had to cover our expenditure on staffing etc without support from Central Government, although Eastleigh Borough Council did give us a grant which helped enormously. Indeed Eastleigh were the only Borough or District Council in Hampshire to give assistance to Parish and Town Councils when they needed support.

**Cllr. Derek Pretty**  
**Chair, Policy & Resources Committee**



## HOME FARM WOODLAND TRANSFERS TO COUNCIL OWNERSHIP

**Whilst it has been a long time coming, we are excited to announce that Hedge End Town Council now officially own Home Farm Woodland.**

At just over 7 acres, this is a lovely area that has been popular with residents for many years. It is a predominantly native woodland with notable Oak and Beech, interspersed with Birch, Cherry and Hazel.

The area can be accessed via a newly installed wooden gate opposite Foord Road and another entrance can be found at the northern end of Woodside Way (see map, below right).



Above left: Woodside Way entrance. Above right: southern access gate.

The woodland is subject to several invasive non-native species (INNS) including Laurel and Rhododendron; work had already started to reduce their spread and we can confirm that this important work will be continued by the Town Council.

The trees are subject to legal protection by way of a Woodland Tree Preservation Order (TPO), which means that some works may require a planning application before they can be completed. It also makes it a criminal offence with potentially unlimited fines if trees are removed without permission.

There is an area of land to the rear of the woodland that remains in private ownership and people are requested not to trespass, and to stick to the designated paths.

We will be adding some signage and interpretation to the gated area, and hopefully some way markers along the footpaths over the coming months.

We hope visitors will respect the woodland; dual waste bins can be found at both entrances, dog mess and litter must be picked up and taken home with you. Not only does this help protect the woodland's delicate eco-system, but it also allows the area to be enjoyed by everybody.





## NEW ACTIVITY TRAIL FOR HEDGE END WAY

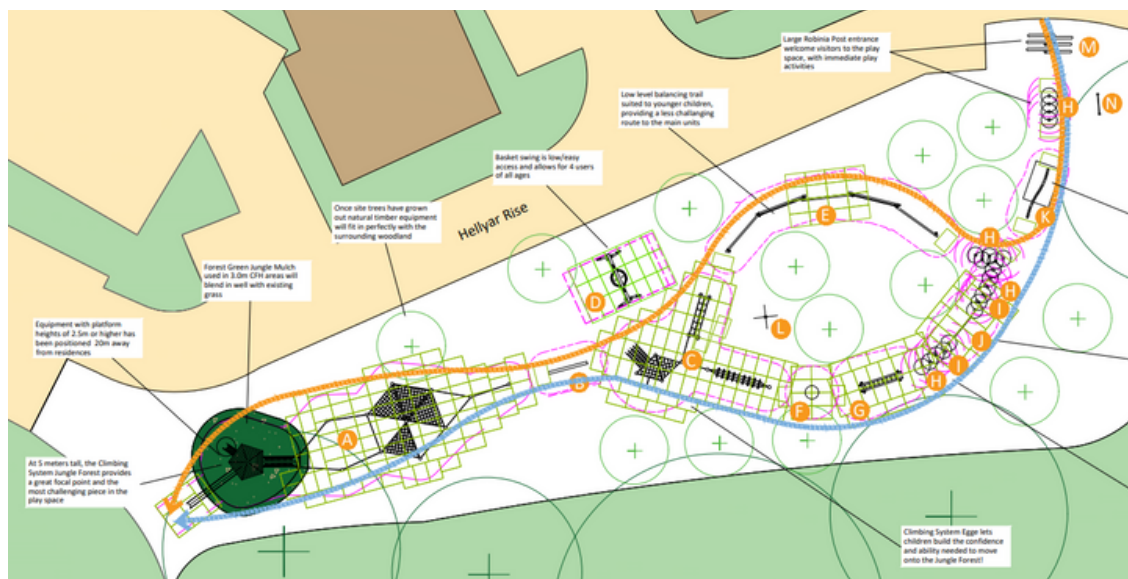
As part of the Hedge End Way development at the southern end of St Johns Road, a new activity trail/play area is being installed late March/April 2021.

Eastleigh Borough Council, who will be leading the installation, tendered for the project last November. Final designs were consulted on with residents in December and the contract was awarded based on the feedback.

The equipment aims to provide a mix of activities for youngsters aged 2-6 and some more challenging routes for the older more experienced user 6-14+.

The design is made from sustainable Robinia wood to fit in with the natural surroundings of the area. The site will be finished with mulch surfacing, grass and trees. This is a new and exciting addition to Hedge End providing some variety in the play opportunities.

Plans for the new Hellyar Rise activity trail



## REOPENING HIGH STREETS SAFELY

As part of the Shop Safe, Shop Local theme, Eastleigh Borough Council applied for funding to lead a project that will support the safe re-opening of high streets.



They were awarded £118,000 from the EU's European Regional Development Fund to deliver the schemes in areas across the borough including Hedge End. Working with Hedge End Town Council the team want to look at footfall in the areas, and are visiting businesses and speaking to people who live, work or visit the area around the Town Centre.

A survey has been running throughout Feb/Mar to collect feedback on your experience of the area. Once we have more information from the team managing the project we will share this with you.

### SIMPLE TIPS FOR IMPROVING YOUR MOOD

**TIP 01**  
Learn how to manage unhelpful thoughts

**TIP 02**  
Stay active

**TIP 03**  
Talk to someone

WHEN THINGS AREN'T SO GOOD OUT THERE...  
MAKE INSIDE FEEL BETTER.  
Visit **Every Mind Matters** for more tips and advice



## DEER PARK SCHOOL BUILD UNDERWAY



Deer Park School will be a new Secondary 7-form entry, free school with capacity for 1,050 students and it has the potential for future expansion to a 9-form entry with capacity for 1,350 students if required.

It is being built on the Woodhouse Lane site to meet the wider education needs of our local area, and is being delivered on behalf of the Department for Education by Hampshire County Council in partnership with the Wildern Academy Trust.

The main school building is arranged over three storeys, with classrooms surrounding the larger spaces of the dining hall, assembly hall and drama studio located in the centre of the floor plan. The new school is on track to open in September 2021, initially for 120 Year 7 students and growing annually to the full capacity of 1,050 students by 2027.

Find out more on the Academy Trust website at: [www.wildern.hants.sch.uk/new-school-information/deer-park](http://www.wildern.hants.sch.uk/new-school-information/deer-park)

## UPDATE ON THE NEW BOTLEY BYPASS

Hampshire County Council started major road improvements in Botley in January and announced the appointment of contractor Volker Fitzpatrick to construct the first phase of the Botley Bypass in conjunction with the access works for the adjacent Woodhouse Lane development site. In combination, these works are referred to as the Uplands Development Infrastructure (UDI).

This first phase of bypass works will provide a widened carriageway as well as a shared footway/cycleway along Woodhouse Lane, and support the Woodhouse Lane development to the west and provide improved access to the new Deer Park School.

The standard working hours will be Monday - Friday 8am - 6pm and Saturday 8am - 1pm. To facilitate the works, temporary three-way traffic signals will be in operation on Woodhouse Lane between Monday - Friday, 9am - 4pm.

All contractors and Hampshire County Council staff working on site will be following national COVID-19 guidelines on social distancing and there is no reason to anticipate contact with members of the public.

All work will be carried out in line with the Construction Leadership Council's Site Operation Procedures based on Public Health England guidance.

For more information, regular updates and local traffic management details during the works please visit scheme webpage:

[www.hants.gov.uk/transport/transportchemes/botleybypass](http://www.hants.gov.uk/transport/transportchemes/botleybypass)



### TOP TIPS FOR DEALING WITH ANXIETY

NHS



#### TIP 01

Try a short breathing exercise

#### TIP 02

Learn how to manage anxious thoughts

#### TIP 03

Keep a mood diary

WHEN THINGS AREN'T SO GOOD OUT THERE...  
MAKE INSIDE FEEL BETTER.

Visit [Every Mind Matters](http://Every Mind Matters) for more tips and advice

Better Health every mind matters



## Planning Permission



### The planning application process summarised

You can make some minor changes to your home without the need to make a planning application. These are called 'permitted development rights' which derive from a general planning permission granted by Parliament (you can find out more at [www.planningportal.co.uk](http://www.planningportal.co.uk)).

You can submit a planning application via [www.planningportal.gov.uk](http://www.planningportal.gov.uk)

#### If you need planning permission

If you do need planning permission, you will be required to submit an application through the Planning Portal where you can find a validation checklist to assist you in providing the right information. Submitted applications will incur a fee for the service.

The planning process is managed by Eastleigh Borough Council (EBC) as the Local Planning Authority, who deal with the day-to-day decisions of individual applications and ensures that they are consistent with the adopted local and national policies and guidance.

#### Support for submitting an application

EBC encourage pre-applications through their advice service where officers will provide guidance on the key issues to be considered. This service offers a number of benefits which whilst chargeable may save time later in the application process. The level of advice you will receive is based on the level of information you submit – the more information you can provide about the proposal, the more comprehensive the advice you receive will be.

#### What's included?

Applications may include a number of documents such as Location Plan, Site Plan, Design & Access Statement and Existing and Proposed Elevations, among others. All of these documents are then available on the EBC portal under the unique application reference number.

#### The Planning Officer

Once submitted, Eastleigh Borough Council will register it and check all the information they need is provided and assign a Planning Officer to consider whether planning permission should be granted.

During the course of the application the Planning Officer will make a site visit as part of their assessment. A report is then entered on to the file, including the officer's comments and recommendations. A decision on the application can then be made and published on the portal.

#### The Town Council's role

As a Town Council we are always consulted on applications in our area, and in neighbouring areas if it is deemed to have an impact on Hedge End. The planning authority will notify the Town Council of submitted applications and allow 21 days for responses. These applications are collated and discussed at the next available Highways & Planning Committee (dates on the back page) which members of the public are welcome to attend.

Following the meeting, the Town Clerk will inform the planning authority of our recommendations and this will be published on the EBC portal.

#### Finding an existing planning application

For those interested in searching these you can easily do this on EBC website under Planning Applications by road name or application number. If you want to be notified of applications nearby you can sign up to 'MyEastleigh'.

### Planning applications

Use our planning portal to search and view all applications in Eastleigh

A weekly list of applications, which includes a quick search of applications decided in the last 7 days

[Weekly list >](#)

Find all applications in the Borough

[Search applications >](#)

Visit [www.eastleigh.gov.uk/planning-and-building](http://www.eastleigh.gov.uk/planning-and-building) if you would like more information.

N.B. For the applicant there are some stages that have been shortened to give an overview of the process and you should ensure you visit the relevant information on the EBC website before submitting an application.



# BOWLING GREEN AVAILABLE FOR PUBLIC BOOKINGS

Hedge End Town Council has a bowling green, located at Woodhouse Lane. It has six rinks, 4 of which are reserved for use by the resident bowling club.

Two further rinks are available for public play, which means, as the weather is now warmer, it's a great opportunity for families to discover a new fun outdoor activity together! There are toilet facilities available onsite at the pavilion, managed and maintained by Hedge End Bowling Club.

You can make a casual booking of a bowling rink between April to September, in advance, with the Town Council Office. Simply call us on 01489 780440 or email [comms@hedgeend-tc.gov.uk](mailto:comms@hedgeend-tc.gov.uk).

When making the booking we just need the date and time, how long you'd like to hire it for and for how many people, as the cost is per player per hour. For the 2021 season this is only £4.12 for adults and under 14's are £3.09.

You can either use your own equipment or use the council's. Council owned mats and bowls can be collected from the 2000 Centre in advance for a £10 deposit which is refunded on safe return.

We would love to see more people use this low-cost facility and if you find you have a passion for this you could consider joining Hedge End Bowling Club who also run short mat bowls.



## Hedge End Bowling Club

We would like to introduce you all to our very friendly, mixed, sociable Bowling Club here at Hedge End which is in its 31st Year of existence.

With around 151 members we support bowling at all levels from absolute beginners to skilled players competing in area and county competitions. It is always a lot of fun and a good way to gain experience. You can partake as much or as little as you wish without any pressure.

Our outside season is from April – September with a short mat indoor season from September – March. We arrange friendly matches with other clubs during both seasons.

A number of our members are qualified coaches who would be happy to iron out any problems you may be having with your game or if you are an absolute beginner, instruct you in every aspect of bowls at no charge.

All of our activities are combined with a brilliant social aspect i.e. after match tea and cakes, Sunday roasts, quiz, bingo and games evenings and for the majority of these functions we have the use of a bar.

Whilst the social side was not possible, due to Covid rules in 2020, play outdoors and indoors was permitted under strict rules, which the members adhered to. This allowed members to enjoy each others company, albeit from a safe distance, during competitive and non competition games.

The Club intends to hold an Open Day during the 2021 season if Covid restrictions allow, to introduce any interested new or existing players to our club. Please keep an eye out for other events that we hope to arrange in conjunction with Bowls England during this years season.

Find out more at [hebc.moonfruit.com](http://hebc.moonfruit.com) or email the Club Secretary at [hebc.club.sec@gmail.com](mailto:hebc.club.sec@gmail.com) or the Membership Secretary at [annebryan@sky.com](mailto:annebryan@sky.com).



Spring is with us again with lots of colourful crocuses, tulips and daffodils. As the warm weather returns, and lawns need mowing, and it's the perfect time to grow! Here are some ideas for things to do and grow in the garden or allotment in the next three months. **By Peter Ayliffe, Secretary - Hedge End Horticultural Society**

APRIL

**Flowers:** Sow seeds for hardy annuals such as poppies and sunflowers indoors, they can go outside next month and will bloom later in the year. Or enjoy instant colour by planting primulas and polyanthus in pots and the front of borders. Continue deadheading spring bulbs and bedding so they don't waste energy setting seed.

**Vegetables:** April is a great time for sowing vegetables as the days are getting warmer and longer. Crops such as peas and carrots can be sown outside, while more tender crops like aubergines, tomatoes, courgettes and runner beans need to be sown under glass or on a sunny windowsill. Main crop potatoes can go in now.

MAY

**Flowers:** Prune spring shrubs after flowering to keep them compact. Pinch out shoot tips of bedding plants and young annuals to encourage bushier growth. Plant sunflowers and poppies outside in late May, avoiding frost.

**Vegetables:** Earth up potatoes as new shoots appear. Seedlings from last month can be planted outside in late May, when risk of frost has passed. Sow batches of salad leaves every few weeks to get a continuous harvest later in the year.

JUNE

**Flowers:** Seeds sown in June will produce a burst of colour in late summer and autumn, examples include Limnanthes and nasturtiums. Also you can plant out bedding plants such as calendulas.

**Vegetables:** Continue sowing salad crops. Beans and Courgettes can be sown outside. Pinch out side shoots from tomato plants. Look out for slugs and snails.

## HISTORY

### THE TOLL GATE: a brief history

By Stephen Tanti, owner of Hedge End Book Shop, above the Post Office

Before the emergence of the 18th century Turnpike Acts, most roads in Hedge End and Botley area were simple agricultural tracks maintained locally within the individual parishes and were sufficient for the movement of animals and other agricultural needs. But not the increasing number of heavy carts and carriages that were needed to supply the growing centres of population due to the industrial revolution.

Turnpike trusts were established to improve the construction and maintenance of roads to cope with the increased traffic by local businessmen who would benefit from improved infrastructure.

In 1796 the Northam Bridge and Roads Company was formed to construct a route which included a bridge across the Itchen River and improved access to Botley and beyond. In 1799 the company purchased Northam Road, only a track at that time, and began to improve the surface with regular maintenance.

To pay for the upkeep, a series of toll bars were erected along its course. In Hedge End the toll bar was situated along Lower Northam Road, approximately 50 metres east of the present day Barleycorn Public House.

The road beyond the toll was known as Botley Road. To pass through the toll the traveller had to pay 3d for a horse drawn vehicle. A cottage was built adjacent to the gate for the toll keepers. One of the earliest families employed as toll keepers in the 1850's were the Dolings, in 1881 it was the Gurmans and in 1891 the Allen family, all employed by the Northam Bridge Company.

In the 1911 census the Hibberd family are listed as occupants with Charles Henri Hibberd as toll gate keeper. The last occupants were William and Emma Swain.

The toll remained open until May 16th, 1929. A freeing of the road ceremony was planned, with the Mayor of Southampton doing the honours. The gate was relocated as a prank by some locals the night before, but was found on the recreation ground with a memorial board nailed to it, 'in memory of ye old toll gate born 1800 died 1929'. The ceremony still went ahead and the road was free for all traffic from that day forward.







# HEDGE END'S LAST Toll Gate Collector

By Andrea Bishop, Great Granddaughter to Henry Swain, Hedge End's last Toll Collector



**My Great-grandfather Henry Swain was born in Romford, Essex in 1875, the second youngest of 8 children. He married Susan Annie Hender in 1900 and they had their only child William Henry Swain, my grandfather, in 1901.**

It appears from a reference letter written by James Percy (Tollman, London) in 1913, that Henry had worked for him as a Toll Collector for over 7 years, so it seems he started this type of work in 1905 and he kept three books giving details of tolls collected from Skeldergate Bridge, York, Derwent Bridge in Yorkshire and Victoria Bridge in Milford Haven, Wales.

From 1912 - 1920 there were no entries in the toll books except for a reference to him working at Gulleycroft Farm in Hedge End for 3 months in 1913, so I'm unsure what other work he carried out in between those dates. I have no records that he went to war. He may have been too old, as would have been nearly 40 by then.

Tolls on Hedge End Tollgate	
11	10.6
12	10.2
13	12.4
14	15.6
15	10.6
16	14.9
17	13.2
Total 91.5	
Monday 8.15.6	
18	13.1
19	14.2
20	13.11
21	19.3
22	19.3
23	14.9
24	22.6
Total 119.9	
12.10.4	

Henry took on Hedge End Tollgate on 11th July 1920 and tolls each day for the first couple of weeks seemed to amount to anything between £0.10.6 to £2.2.26, with Saturday's takings being the highest.

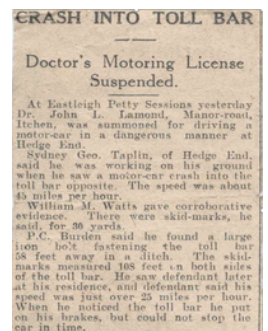
There was one incident reported in the papers regarding a motor incident at the Tollgate, which mentions old family names still recognised by many people today living in Hedge End including a Dr Lamond, William Watts, Sydney Taplin and a P.C. Burden.



In 1928 my Grandfather William married Emma Corbin and they started life together in the Tollhouse. They are pictured here with their first son (my father) Kenneth William Swain, born there in December 1929.

Henry died in 1932 and he and his wife Sarah are buried in the churchyard of St John's church in Hedge End. In 1979, 50 years after the tollhouse was demolished, my Grandmother and Father attended a ceremony to unveil a commemorative seat where the house once stood. This was donated by Mr Ronald Pugh, son of the Mayor who freed the route.

In 2019 I noticed the seat had been removed due to it being unsafe, but I felt disappointed to think that a part of Hedge End's history might be forgotten so, with the kind help of Hedge End Town Council and Eastleigh Borough Council, the seat was replaced. It displays both the original plaque and another to remember my father who passed away in 2016. We hope the seat remains for another 50 years for the residents of Hedge End to enjoy!





# Springtime

at Wildern Local Nature Reserve



The early Spring months are a great time to discover the biodiversity in Wildern Local Nature Reserve and there is always something interesting to see.

The reserve is conveniently situated close to the town centre (see map below), so access is easy and perfect for a stroll. Today, we would like to take you on a virtual tour through the nature reserve pointing out some of the interesting springtime features so please come along and join us, and discover what you could see during your next visit!

We start at the gated entrance at Coltsfoot Close. As we enter the reserve, Wildern Moor - the star of the show - is on the right. This fenced area is the biodiversity hotspot of the reserve, the town and possibly the whole borough! There are no public footpaths through the moor, but you get good views looking over the double-bar gates which are opened twice a year to let the cattle in and out.





Much of this moor is flooded during the winter months but the habitat is perfect for Purple Moor-grass and Southern Marsh Orchids (both pictured above), as well as Roe Deer who can sit undisturbed in the sun.

Back onto the main track, we have Coltsfoot Pond on the left, another biodiversity hotspot where twenty Dragonfly species have been recorded!

The dragonfly nymphs, after spending many months feeding on larvae and tadpoles, emerge from the water in spring, moult their skin and emerge as a beautiful dragonfly.



Continuing on the path towards the junction with the Old Stoney track, we cross one of the watercourses that lead to the Hamble River before arriving at a huge oak tree on the corner of the lane, pictured below left.



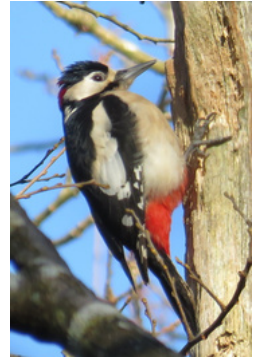
This is one of the oldest trees in the area, at over 250 years old; when it was planted in 1767, King George III was on the throne and William Pitt the elder was Prime Minister. The Council plan to give this old tree a 'hair cut' to give it a new lease of life for another 250 years! Oak trees can live for up to 1000 years, so it will be around for some time yet!

The Old Stoney track or, to use its formal name Goodall's Lane (pictured, right), is the original road access to Wildern Farm from Wildern Lane. The farmland extended on both sides of the track and was used during World War 2 for food production. The traditional farm methods used on this land account for the high degree of biodiversity we now find in our nature reserve.

Much of the woodland along this track has developed since the end of the war. Further down the Old Stoney you come to the woodlands of Goodall's Meadow which as with the Moor are flooded for much of the year. This area is a good place to view the birds in the Spring, so keep a look out for the Robin, the Wren and the Goldcrest that all breed in this area.

You may even hear the drumming sound of the Great Spotted Woodpecker (pictured, below right) drilling holes in the dead trees for their nest.

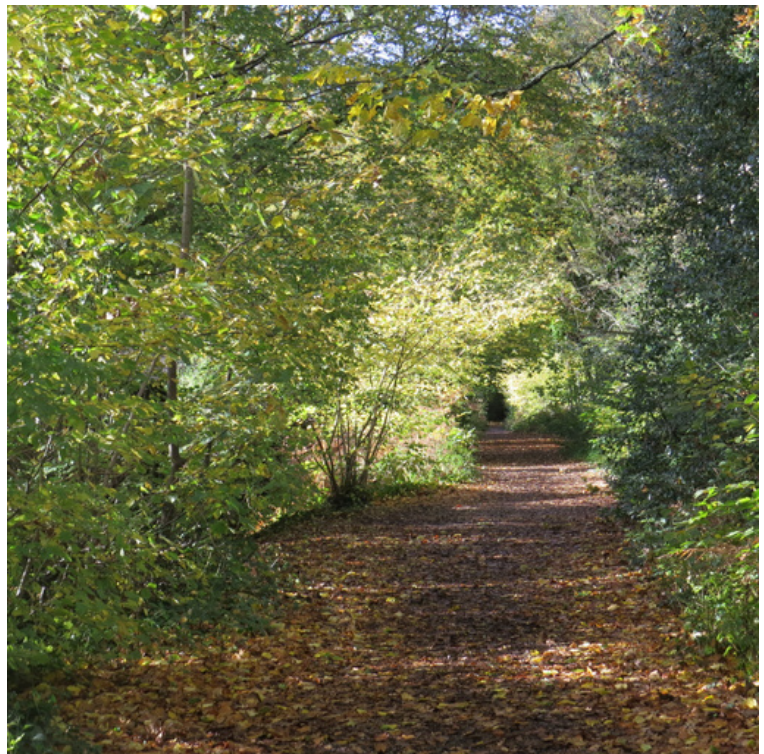
At the end of Old Stoney, you will see the 'new' Wildern farmhouse, a much larger structure than the original house which was built from timbers from the warships that were in turn at Portsmouth dockyards.



From here there are a number of paths to choose from; one to Greta Park, another towards the ponds in Goodall's Meadows and another longer path up the hill into Gulley Mead and Bridget Mary Gardens.

We will continue on through the woodlands to the Cricket Ground car park and before we finish our journey.

We will spend a few minutes admiring the bees and butterflies feeding on the wildflowers growing in the verge, which have purposely been left un-mown to grow wild.



## Get Involved

Friends of Wildern Local Nature Reserve are passionate about conservation. If you would like to find out more about this special place, please join us:

[www.facebook.com/groups/2030431683870743](https://www.facebook.com/groups/2030431683870743)

**by George Baker on behalf of Friends of Wildern Local Nature Reserve**



# HALLS FOR HIRE

## 2000 CENTRE

- Tables and chairs available - Large hall capacity 150 seated / Small Hall 80 seated
- Kitchen with microwave, cooker and water heater.
- Disability access and toilets (DDA)
- Car parking available



## NORMAN RODAWAY PAVILION

- Tables and chairs available for 85 seated
- Kitchen with microwave, cooker and water heater.
- Disability access and toilets (DDA)
- Car parking available
- Outdoor enclosed children's play area



## DRUMMOND CENTRE

- Tables and chairs available for 100 seated
- Frank Vickers Hall for 50 seated guests
- Kitchen with microwave, cooker, water heater
- Disability access and toilet (DDA)
- Car parking available
- Outdoor enclosed children's play area



## OLD SCHOOL HOUSE

- Tables and chairs available for 80, 50 & 30 seated. (Large hall, middle hall, small hall)
- Kitchen with microwave, cooker and water heater
- Disability access and toilet (DDA)
- Car parking available



## TURNPIKE PAVILION

- Tables and chairs available for 48 seated
- Kitchen with microwave, cooker and water heater
- Disability access and toilet (DDA)
- Car parking available
- Outdoor enclosed children's play area



We are re-opening our halls as guidance permits. We are now taking bookings which may be subject to change if the guidance changes.



[commsofficer@hedgeend-tc.gov.uk](mailto:commsofficer@hedgeend-tc.gov.uk)



Current fees:  
Weekdays £18.88 ph  
Weekend £25.98 ph



# LOCAL SERVICES DIRECTORY

The Berry Theatre, Wildern Lane	02380 652333
The Community Hub (Youth Centre), Wildern Lane	01489 780440
Citizens Advice Bureau (Outreach Service), Salvation Army, 85 Whites Way	03444 111 306
The D@rt Centre (Arts), Wildern Lane	01489 779471
Hampshire Constabulary	101
Hedge End Good Neighbours Network	0333 448 842
Hedge End Household Waste Recycling Centre, Shamblehurst Lane	01489 795499
Hedge End Library, 11 Upper Northam Rd	0300 555 1387
Hedge End Post Office, St Johns Centre, Upper Northam Rd	01489 782066
Jobcentre Plus, Eastleigh Capital House, 100 Southampton Road, SO50 5PB	0800 169 0190
Skyline Gold Radio 102.5FM, St John's Rd	01489 799000
TADIC (Teenage Drop-in, Weds 3-6pm), 28 Lower Northam Rd (tadic@btinternet.com)	07879 761660
Tennis   Bowls	01489 780440
Wildern Leisure Centre, Wildern Lane	01489 787128

## SCHOOLS

Berrywood Primary School, Maunsell Way	01489 780068
Freegrounds Infants School, Hobb Lane	01489 782075
Freegrounds Junior School, Hobb Lane	01489 782295
Kings Copse Primary School, Kings Copse Ave	01489 785040
Shamblehurst Primary School, Wildern Lane	01489 782342
Wellstead Primary School, Wellstead Way	01489 799351
Wildern Secondary School, Wildern Lane	01489 783473

## HEALTH

St Luke's Surgery, St Lukes Close	01489 783422
The Medical Centre, 24-26 Lower Northam Rd	01489 785722
Hedge End Dental Surgery (NHS), Saracen House, Freegrounds Avenue	01489 790661

## PLACES OF WORSHIP

Hedge End Baptist Church, 72A Upper Northam Rd	01489 786260
Hedge End Methodist Church, 42 St John's Rd	023 8073 9238
Hedge End United Reformed Church, St Johns Rd	01489 787408
Kings Community Church, Upper Northam Close	01489 784333
Our Lady of the Assumption Catholic Church, 3 Freegrounds Rd	023 8044 9088
St John's The Evangelist Church (C of E), St Johns Rd	01489 790048
St Luke's Church, St Luke's Close	01489 781448
The Salvation Army Community Church, Wellstead Way	01489 798681

## HALLS FOR HIRE

2000 Centre (Large & Small Hall), St Johns Rd (HETC)	01489 780440
Drummond Community Centre, Drummond Rd, Grange Park (HETC)	01489 780440
Norman Rodaway Pavilion, Heathhouse Lane (HETC)	01489 780440
Turnpike Pavilion, Turnpike Way (HETC)	01489 780440
Old School House, St Johns Rd (HETC)	01489 780440
Hedge End Village Hall, St Johns Rd	01489 784962
Methodist Church Hall, St Johns Rd	01489 784823
Underhill Centre, St Johns Rd	01489 790048
United Reformed Church Hall, St Johns Rd	01489 787408



# CONTACTS AND COMMITTEES



Hedge End Town Council  
2000 Centre  
St John's Road  
Hedge End  
SO30 4AF



Town Clerk: [townclerk@hedgeend-tc.gov.uk](mailto:townclerk@hedgeend-tc.gov.uk)  
General: [commsofficer@hedgeend-tc.gov.uk](mailto:commsofficer@hedgeend-tc.gov.uk)  
Gazette: [marketing@hedgeend-tc.gov.uk](mailto:marketing@hedgeend-tc.gov.uk)



01489 780440



Office hours : Mon - Thurs **8.30am - 5pm**  
Fridays **8.30am - 4.30pm**  
Weekends & Bank Holidays: **Closed**

## COUNCIL COMMITTEE MEETINGS

As we go to print we are unsure if the Government will extend the ruling that allows us to hold online meetings. We are preparing for face to face meetings when the current ruling ends on May 7th. Due to this there may be some changes to the meetings programme and you are advised to check the website for changes and cancellations. All meetings begin at 7pm, except Highways & Planning on the third Wednesday, which starts at 6.45pm ahead of Full Council which starts at 7.30pm.

COMMITTEE	APRIL	MAY	JUNE	JULY
<b>Policy &amp; Resources</b> First Tuesday monthly	6th	4th	1st	6th
<b>Recreation &amp; Amenities</b> Second Weds monthly	14th	12th	9th	14th
<b>Highways &amp; Planning</b> First & Third Weds* monthly	7th, 21st	5th, 19th	2nd, 16th	7th, 21st
<b>Full Council</b> Third Weds monthly	21st	19th	16th	21st

\*The Highways and Planning Committee meeting held on the third Wednesday will determine planning applications **only**.

## KEEP UP TO DATE

with the latest council and community news via our social media channels:



[/HedgeEndTC](https://www.facebook.com/HedgeEndTC)



[@HedgeEndTown](https://twitter.com/HedgeEndTown)



[/HedgeEndTownCouncil](https://www.linkedin.com/company/HedgeEndTownCouncil)

[www.hedgeend-tc.gov.uk](http://www.hedgeend-tc.gov.uk)



**HEDGE • END**  
TOWN COUNCIL