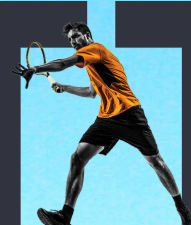


ISSUE 75

WWW.HEDGEEND-TC.GOV.UK

GAZETTE



FREE



SUMMER EDITION 2019

Community Halls & Village
Bandstand Available
for Hire

Advertise Your Local Business
In Future Gazettes

Hedge-End Carnival Takes
Place on the 6th July

QE2 Activity Centre Official
Opening of New Gold Day
Service Building

A Day in the Life of A...
Groundsman

2019 Annual Parish Assembly
Update of Events

Hedge End Town Council
Welcomes New Councillors
& Appoints Chair of Council



HEDGE • END
TOWN COUNCIL

WHAT'S ON GUIDE. LOCAL SERVICES. EVENTS. COMMUNITY NEWS. COUNCIL NEWS

• HEDGE END TOWN COUNCILLORS •



Wildern

Margaret Allingham
01489 798646



Berrywood

George Brown
07841 685044



St Helens

Chair: H & P*
Paul Carnell
01489 785216



Berrywood

Ian Corben
07561 343858



Freegrounds

Helen Corben
01489 692406



Dodwell

Tonia Craig
02380 404680



St Helens

Cynthia Garton
01489 797213



Freegrounds

Chair: Personnel & Strategy Committee
Keith House
07768 357918



Wildern

Patricia Jenkins
01489 786265



Wildern

Vice Chair of Council
John Jupe
01489 780293



Shamblehurst

Chair of Council
Lucy Jurd
07730 072606



Station

David Kinloch
07875 232557



Berrywood

Rupert Kyrle
07875 232557



Station

James Mitchell
0800 316 3435



Wellstead

Cliff Morris
07848 946822



Shamblehurst

Ron Nichols



Station

Chair: P & R*
Derek Pretty
01489 797213



St Helens

Julie Skinner
07725 562429



Wellstead

Anne Small
07900 255518



St Johns

Ben Thomas
01489 790701



St Johns

Chair: R & A*
Jane Welsh
01489 784962



St Johns

Geoff Westgarth
07971 316269

P & R* = Policy & Resources Committee

R & A* = Recreation & Amenities Committee

H & P* = Highways & Planning Committee

(Email: Firstname.Lastname@hedgeend-tc.gov.uk)

A Note From...



The Chair &

I am delighted to have been elected Chair of Hedge End Town Council having served as vice chair over the last year, and would like to thank Cllr Corben for all of his work as Chair last year and the support and guidance he has given me as a councillor over the previous two years.

As a bit of background about myself, I have lived in Hedge End for over 15-years, use and enjoy many of the local shops and amenities and my two children attend school locally. I have been a town councillor for the last two years, an Eastleigh borough councillor for the last 12 months, and have been involved in other local groups and activities.

Away from the demands of a full-time job and council duties, I enjoy sport and music, and I have played in a local orchestra and local amateur shows for many years now.

The Town Clerk's Desk

I am very much looking forward to meeting and working alongside my council colleagues, the people who work hard serving us all in the community, the people of Hedge End and in particular hearing their views and thoughts on our town.

We have been a rapidly developing town in the last few years but still retain many of the institutions and traditions that have lasted through the years, and I am looking forward to the challenges my time as Chair will bring.

I hope to see you at future council meetings and community events throughout the year.

Chair of the Council - Cllr. Lucy Jurd

Well, what a busy time it has been since I started three months ago, who would have thought that a Town Council could be so involved. I hope to share here, some of the things that have been keeping us busy over the last few months.

I probably joined at one of the busiest times of the year, the financial year end was imminent and getting to grips with the budget was my first priority. With a great staff team around me understanding how the Town Council runs on a day to day basis was less of an issue as the team went about their jobs as normal. Hopefully, as residents, you will have seen improvements in the Website and Social Media and if you haven't, I encourage you to take a look. Facebook is updated frequently with the latest news and events.

Next was onto organising ourselves for the upcoming elections and whilst the office is not involved in the election process we were making preparations to welcome new councillors, update the website with new boundary changes that came into force and as many of you will see from the earlier pages ensuring we have photos of all our councillors so you can contact them.

Shortly after this came the Annual Parish Assembly (APA) where we welcomed members of the community to the Town Council Offices (more about this on page 4).

The following evening the Town Council held its Annual General Meeting, this is different to the APA in so much as it is more formal and involves the new and returning councillors being elected to roles for the forthcoming term until May 2020. With the formalities of Cllr Lucy Jurd being elected as Chair of the Town Council and Cllr John Jupe as Vice Chair, we moved onto the committees and appointments to outside bodies. A full list of these can be found on our website.

In amongst all this very formal process, there have been improvements we have been making that may have gone unnoticed some are mentioned in the committee reports; others include work taken place on the allotments to remove the invasive poplars. The paddling pool pump has been serviced and is now in full use for the summer season already being well used on those hot days we had recently. The tennis courts are being used more frequently and JEM Tennis are providing some of the coaching services including the popular Tennis for Kids programme where for just £29.99 children can receive 6 tennis lessons, a t-shirt, tennis racket and ball set.

The Town Council also supports local groups with grants, if you are interested in applying for a grant this year please visit the website for an application form <https://www.hedgeend-tc.gov.uk/the-council/grant-application/>

Town Clerk - Sarah Jelley



COUNCIL NEWS

ANNUAL PARISH ASSEMBLY

This year the Annual Parish Assembly took place on the 14th of May at the 2000 Centre, Town Council Offices, and it could not have been a happier occasion with a great turn out from the community! The weather made for a glorious evening, where the Parish Assembly was joined by the newly appointed Mayor of Eastleigh Cllr. Darshan Mann and retiring Town Council Chairman Ian Corben, to help hand out some of the very special awards and certificates to those who have shown hard work and dedication over the past year.

Hedge End Town Council awarded three categories this year, Young Persons Serving the Community, Best Cultivated Allotments, and Youth Awards, which was met by a round of applause by those in the audience recognising their achievements.

The Annual Parish Assembly also offers Councillors a chance to share with the community updates and reports surrounding Hedge End, such as Finance, (HEWEB) Hedge End, West End, Botley* and Committee groups like the Carnival, which were given by Town Council Chairman Ian Corben, Deputy Mayor of Eastleigh, Cllr. Cynthia Garton and Cllr. Jane Welsh. This was closely followed by Nigel Paterson of Kings Community Church.



Village Bandstand

To add a little music and fun to our town centre, then why not perform from the bandstand on our lovely green – and promote yourself at the same time? Singing or instrumental, young or ...Not so young! If you're a local musician, small choir or acapella group then we'd love you to perform on our bandstand. It's simple and free! Just book a date with the Hedge End Town Council Offices and turn up with your equipment. Electricity is available on the bandstand for amplification as required.

If you would like additional help with promotion at the bandstand then please talk to the Hedge End Town Council.

Cllr. Geoff Westgarth



HEDGE-END TOWN COUNCIL

VILLAGE BANDSTAND

FREE HIRE

Contact Hedge End Town Council to find out more. Email: commsofficer@hedgeend-tc.gov.uk

CALLING ALL DRIVERS

Volunteer drivers needed to take elderly clients to hospital, doctors, dentists or medical appointments. Expenses will be paid!

0330 448842




Part of the **GOOD NEIGHBOURS NETWORK**

COUNCIL NEWS

RECREATION & AMENITIES

Our Summer season is here but still not very warm. We have had a few days at a time with a heatwave or back to cold winter days. However, by the time this is received by everyone let's hope we are back to another heatwave for the rest of our summer period.

We had a visit from the Green Flag Inspectors at the end of April. I know the ground staff had been to the cemetery and the war memorial to make sure it was spic and span but even so, we know how particular the judges are, so we just must wait and hear from them with their result. Fingers crossed we will be ok as it will be the tenth year running if we receive it.

Our Allotment holders are now working hard with getting their Allotments produce up and running. Hopefully, our new toilet for Spring Field will be in situ in the very near future. I am sure this will be a great asset to everyone and there are lots of water points now too, they should be completely self-contained.

Our children's play area at Dowds Farm Park is receiving great comments and is being welcomed by all concerned.

Our paddling pool opened at the end of May so let's hope the weather improves for our youngsters to enjoy this very enjoyable area. As you know our Town Council Offices Car Park and Budgens can be used for users of the pool so please try and use it when possible. We also contribute, financially, to Hedge End Club for the allocated spaces at the entrance to their Club, so please use these spaces too to keep Bursledon Road free from the extra traffic.

Once again, we would like to thank all who work so hard keeping our flower beds up to a wonderful standard all year round. It is very much appreciated by all our residents.

Finally, may I take this opportunity of thanking those who re-elected me at our local elections. I do appreciate it and am always happy to help in any way I can.

We also welcome any members of the public to our monthly meetings and our R and A meeting is always held on the 2nd Wednesday of each month.

Cllr. Jane Welsh- Chair- Recreation & Amenities Committee



Hedge End Rotary

This year the tea party took place on Sunday the 14th of April at The 2000 Centre and, as usual, it was very well attended when we welcomed around 80 of our friends from the village.

As always, everyone looked very smart and, on this auspicious occasion, club members couldn't resist the opportunity to show off our new blue Rotary outfits.

This is always an enjoyable day for members of Hedge End Rotary, and we look forward to a busy year ahead. The next big event will be our 20th-anniversary celebrations in June when we will be joined by members of our sister club from France, Le Rotary Nantes Dobrée.

If you would like to know more about Hedge End Rotary or would like to consider joining us, you can find us on our website, Facebook and Twitter, or telephone David Baynes on **01489 690126**.



HAMPSHIRE ALERT JOIN TODAY

Receive FREE crime and community information about where you live

Register at www.hampshirealert.co.uk



COMMUNITY NEWS



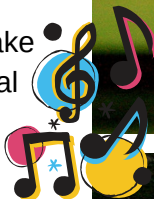
Voluntary
Positions for
the Carnival
are Still
Available!



HEDGE END CARNIVAL

For nearly 100 years Hedge End has held a carnival and the tradition continues on Saturday, July 6th.

The carnival is organised by members of the community for the benefit of the community with any profit being donated to good causes that improve the quality of life in Hedge End throughout the year. So, remember to give generously during the procession and when you come onto the showground. The best way to enjoy your carnival is to take part, it is not too late to be in the procession. The optional theme is "Musicals". Check out the entry form on the carnival website.



The Musical theme is prominent at the Gala Show where the Fair Oak Dog Display Team will be joined by the New Music Makers, Dance Out Loud, Swanmore Samba, Performing Arts Co. Sound Pop Academy and Bollywood Dancers to entertain you. We invite you to stay a little longer this year and enjoy The Remotes and perhaps have a drink from the bar as they round off the best day of the year in Hedge End.



Late 1950's



Image: Stephen Tanti



A Great Big Thank You After 25 Years in Hedge End

Derek & Diane Firth of "Thoughts" have now retired from their shop in Hedge End. This family business has been at the center of the community for 25 years and Derek & Diane would like to express their sincere gratitude to all their loyal customers for the support and friendship received over that time. They will miss all the friendly faces and chit chat that has been an important part of their lives.

Derek & Diane will continue to live in Hedge End and run their balloon business with their daughter, Neely, so are still part of the local community, and the name of "Thoughts" lives on. They can be contacted via their website thoughtsonline.co.uk by email, thoughtshedgeend@yahoo.co.uk, or by phone: 01489 780771.

If you would like to sit down and enjoy the entertainment, then bring a chair and please remember that you need a carrier bag so that you can take home any rubbish you create and dispose of it properly.

Appeals made for people to help with the tasks needed for the carnival to take place have not brought forward any volunteers. Help is greatly appreciated, so join the fun and get involved by contacting the organisers now via email: info@hedgeendcarnival.org.uk

There will not be a printed carnival programme published this year so please find all information that you need from the carnival website www.hedgeendcarnival.org.uk

Written by Nick Wise



Everyone is invited to attend!
Free Admission

In aid of the Macmillan Cancer Information & Support Centre at Southampton General Hospital

SUMMER FAYRE

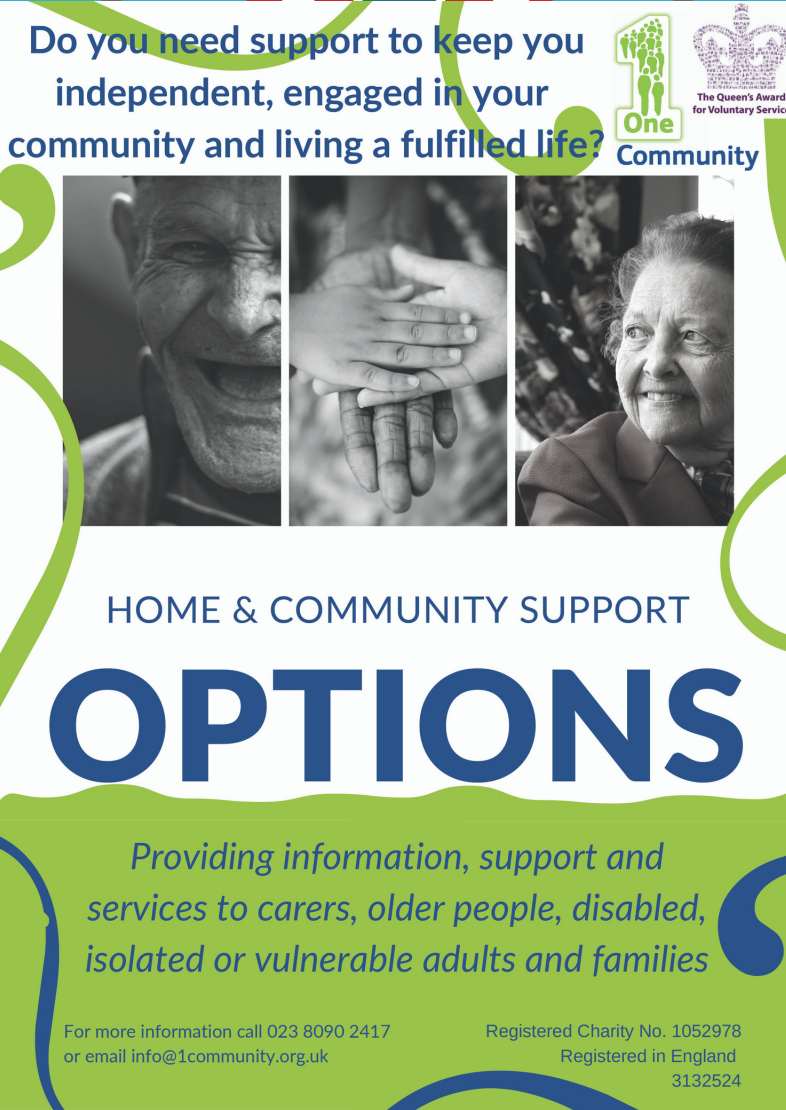
Saturday 20th July 2019
10am-2pm

- Body Shop
- Homemade Jams
- Craft items
- Books
- Jewellery
- And Much More!

The Underhill Centre, ST John's Church, Hedge End.

Refreshments Available Tables available to hire £10.00 each.
Contact Denise on **07886459160** or Email: **dozycowdesigns@yahoo.com**

Prepared by Hedge End W.I.



Do you need support to keep you independent, engaged in your community and living a fulfilled life?

1 One Community
The Queen's Award for Voluntary Service

HOME & COMMUNITY SUPPORT OPTIONS

Providing information, support and services to carers, older people, disabled, isolated or vulnerable adults and families

For more information call 023 8090 2417 or email info@1community.org.uk

Registered Charity No. 1052978
Registered in England 3132524

Performing Arts Company Presents
A NEW MUSICAL COMEDY



The Addams Family

11th- 13th July 2019
7.30 pm Performances
Tickets £12.00 Concessions £10.00
The Berry Theatre - Hedge End

Box Office - 023 8065 2333
www.theberrytheatre.co.uk
www.performingartscompany.org.uk



BLUE CROSS FUN DAY AND DOG SHOW

Saturday 7th September 11am-3pm

Dog show commences at 12pm, £2 per class (entry on the day). Two dog show rings, classes include waggiest tail and most appealing eyes!

Stalls include:

- Hot Food
- Tea & Cakes
- Bouncy Castle
- Kids Activities
- Face Painting
- Goods for Sale and much more!

Hatch Grange, West End
Southampton SO30 3FE

[@southampton.bluecross](https://www.facebook.com/southampton.bluecross)
[@SouthamptonBC](https://twitter.com/SouthamptonBC)

For more information contact: Victoria.murray@bluecross.org.uk

Pets change lives
We change theirs

BLUE CROSS FOR PETS

QE2 Activity Centre



On Monday 8th April, QE2 Activity Centre celebrated the official opening of their new Gold Day Service Building.

The Centre provides day service and activity opportunities for people with disabilities. Activities include gardening, music, cooking, woodwork, canoeing, climbing, archery and ropes course.

The day included some welcoming songs from the centre's own Ukulele Band, the Mayor of Eastleigh at the time, Bruce Tennant, cutting the ribbon (with some help from Paul, one of the day service users) and a tour of the new building.

Accessibility campaigner, Sarah Brisdion's son, Hadley, cut the ribbon to the Changing Places bathroom and Sarah said:

"It's a brilliant facility that will make the Centre accessible to so many more members of the disabled community. It was a pleasure to meet such passionate people and help celebrate this achievement."

Tel: 02380 404844

Email: qe2centre@aol.com

www.qe2activitycentre.co.uk

Fundraising donor, Sunny Crouch OBE, said: "The new Day Service facility is outstanding and it was a joy to see how cheerful and supportive your users are of each other, which is clearly influenced by the love and respect they are shown by you and your staff team."

Centre Chairman Wayne Irish thanked all who attended the opening as well as those who made the building possible in the first place. It was a lovely afternoon and was enjoyed by all.

QE2 Activity Centre can be Located at River Hamble Country Park, Pylands Lane, Bursledon, Southampton, SO31 1BH.



Be Brave... Lets Talk!

Death is a largely taboo subject for us, yet it will happen to us all. Even at an early age, the death of a grandparent or a much-loved family pet is a common experience. Death is the only experience everyone is guaranteed to share, but only around 20% of UK adults have discussed their funeral wishes with anyone (2014 Dying Matters survey). We're scared to talk about death in case it brings it into our lives, or upsets whoever we're talking to. But talking about funerals can have real benefits. Here are some reasons why you should be having this conversation.

- Removing uncertainty – your family don't have to guess what you wanted.
- No-one has to make big decisions when they're grieving.
- Time to research options and discuss what works for all involved.
- More accurate idea of costs if considering making financial provision.
- Creates a funeral which is right for you and your family, helping their grief.
- Less emotional to talk about death when there's no immediate prospect of it happening.

So, go on, be brave. Start talking to those who you love about your funeral wishes and theirs.

Written by Funeral Director & Celebrant, Chelsea Duke

Bereavement

Support Groups

Eastleigh Bereavement Support -

<https://www.ebs-bereavement.co.uk/>

For those with faith, St John's has this

on their website: <https://www.stjohns-hedgeend.org.uk/info/pastoral-care/bereavement/>

Wessex Cancer Trust:

www.wessexcancer.org.uk

Samaritans -

<https://www.samaritans.org/branches/samaritans-southampton-and-district-branch>

Child Bereavement UK

www.childbereavementuk.org

COMMUNITY HALLS

2000 CENTRE

- Tables and chairs available - Large Hall capacity 150 seated / Small Hall 80 seated
- Large Hall -Evening hire until midnight, car parking available
- Catering facilities in large hall with oven, hob, crockery available, microwave and water heater
- Kitchenette in small hall with water heater for tea / coffee. Disability access and toilets (DDA)



NORMAN RODAWAY PAVILION

- Large brightly decorated hall with views onto playing field, ample car parking
- Tables and chairs provided for up to 85 guests
- Kitchenette area with cooker and water heater, crockery available
- Disability access and toilets (DDA)
- Evening hire until midnight
- Outdoor enclosed children's play area



DRUMMOND CENTRE

- Tables and chairs available for 100 seated guests.
- Kitchen with microwave, cooker and water heater
- Frank Vickers Small Hall (50 seated guests) also available
- Accessibility and toilets (DDA)
- Evening hire until midnight
- Car parking available to the front of the building
- Outdoor enclosed children's play area



TURNPIKE PAVILION

- Tables and chairs capacity for 48 seated guests.
- Small kitchenette area with cooker, microwave and water heater.
- Disability access and toilet (DDA).
- Car parking available
- Evening hire until midnight
- Outdoor enclosed children's play area



COMMUNITY COMPUTER SUITE

Open Monday to Friday
Throughout the day FREE for public use

Monday-Thursday 8.30am-5pm
Friday 8.30am-4.30pm

Situated in the reception area of the Town Council Offices

A DAY IN THE LIFE OF...



A Groundsman

Senior Groundsman Cyril

What time does your day typically start and end?

My day typically starts around 7.30am in the morning and I will usually finish up around 5pm. I like a good cup of tea, so tend to work a little later to make up the time. ☕

Why were you drawn to this role?

I have always had a passion for horticulture and gardening, so this instinctively drew me to outdoor roles within my career. Even growing up I used to help my parents on their farm strawberry picking right up until the '90s. 🍓

I came across this role of a groundsman through a friend at the time, who told me there was a position opening very soon, and that I would be a great candidate. That was 29 years ago now...

Which areas in and around Hedge End do you maintain? 🌳

We do a great deal of maintaining the grounds in Hedge End this time of year, such as the Bowling Green and Woodhouse Lane. As well as the grounds which belong to all of the Community Halls we own, the Cemetery, Allotments, Paddling Pool and parks like Dowd's Farm. I find it is most rewarding when I get to plant trees, as I have seen the way it changes the landscape over the years.

Does the weather affect what you do? ☀️

The weather majorly affects how our day is shaped, so each day, as you can imagine is different.

How many years have you been with Hedge End Town Council? 🌱

I started on the 5th of February 1990; it was very different back then. The area we covered was a lot smaller and there were only the three of us to start. The team has since expanded to include a total of seven members of staff.

I have seen the Town Council grow with the times and the challenges it has faced, but also become a forward-thinking organization which will even recycle concrete!

What is your favourite piece of equipment? 🚜

Probably my tractor, you may have seen me pulling the floats in the past for the local carnival. I have been doing this voluntarily for many years now and have often given my time to local community projects.



When would you say is the busiest time of the year for a grounds person?

Autumn- As the seasons' change, we find in Autumn there is a lot of clearing of dead foliage & leaves. We try and make the most of the good weather before it turns to Winter. 🍂

We also renovate the Cricket Square and Rota rake the Bowling Green which are quite big jobs.

What skills do you think are important to have, within a groundsperson role?

You must be approachable and diplomatic to the general public, as you are seen by residents and locals who get to know your face. It is also important that you can work in a team environment and support your colleagues. As for your skillset, it is greatly beneficial if you are mechanically minded, as the equipment is far more advanced now than it ever has been, so knowing this is a valuable asset. 🚜

How could the residents of Hedge End help the life of a groundsperson and the community?

Volunteer groups are a great help to us and the community. Particularly groups which help clear litter from public spaces, as this is can be very time consuming and enables us to focus on other just as important jobs within Hedge End.

When I was young you could return bottles to the local village shops and you would receive a little bit of money back, but this has changed now and with disposable cans etc. We find a lot of litter and broken glass in public areas, and so spend a great deal of time sweeping as it is not great for dog walkers, pets or the local wildlife within the area. 🍁

With Special Thanks to Cyril

CONSERVATION



WILDERN LOCAL NATURE RESERVE

Hedge End Conservation Volunteers (HECV) – Established in 2016 the group has grown greatly in members. Our vision is to develop Wildern Local Nature Reserve (LNR) and other Hedge End natural havens into tranquil oases that through a diversity of habitat protect and enhance a broad range of wildlife, as well as being welcoming, clean and safe for people to visit.

The group meet monthly under the guidance of Hedge End Town Council (HETC). Volunteers carry out a range of activities including litter clearance, pond management, and coppicing.

Where trees have grown in, over and around ponds, volunteers have assisted in their removal, opening them up to the light, to achieve greater plant and invertebrate variety, along with everything else further up the food chain. Ponds in themselves are better for Carbon capture than woodland.

Coltsfoot Pond in recent years suffered from the invasive and non-native Parrots Feather pondweed, which at one point had spread across the entire surface. HECV helped clear most of it and while some remains among the bulrushes, we will micromanage removal, as native species become established, providing suitable habitats for aquatic life. But, by its nature, it is unlikely to be totally eradicated.

Litter is a perennial issue with several hot spots where people gather, some of whom (not all) discard food

and drink containers, etc, rather than place into bins provided. Volunteers working in an area will include litter removal among their tasks.



Coltsfoot Pond, Wildern, springing to life

From setting up the HECV, our group, Friends of Wildern LNR, arose, and it would be another step forward if similar groups established around Dowd's Farm Park, etc, to complement the push to improve our local environment. This will help improve connectivity for wildlife (as well as benefiting people).

Monitoring and recording species form a vital element to understanding how to, or not to intervene – who knew that Wildern LNR has (at least) 14 dragonfly and 27 butterfly species?

Written by Terry Crow & George Baker

Wildern Nature Park (FoWNP) Facebook group here <https://www.facebook.com/groups/2030431683870743/>
For those not on Facebook, FoWNP can provide a bi-monthly report; please contact cgbretired@hotmail.com or terry-crow@ntlworld.com



Green Hairstreak recently found in Coltsfoot Paddock, Wildern

WHAT'S ON GUIDE 🔍



ARTS & CRAFTS

Art & Craft Club	Tue 1.30-3.30pm Village Hall Outings Demos 01489 798233
Calligraphy	Wed 1.15-3.15pm 2000 Centre Beginners welcome email: mary.noble@btinternet.com
Crafty Saturdays	Saturday Mornings The d@rt Centre All ages & abilities 01489 779471
Flower Club	1st Tues, Monthly 7pm 2000 Centre Demos Workshops 01489 783115

MUSIC & DANCE

Dance Junkie	Mon Eve The d@rt Centre Street Dance Classes All ages & abilities 01489 779471
Glee Club	Mon 7.15-8.45pm Drummond Centre Singers All Ages & Abilities 07810 127351
Hamble Valley Brass	Mon 7.45-9.20pm Community Band The d@art Centre, Wildern Lane 07929 061068
Jamz Dance	Zumba, Street & Toddler Classes Hedge End Club www.jamzdance.co.uk 07929 095405
Line Dancing	Line dancing classes Fri 10 - 11am Village Hall All Levels & Abilities 07967 631739
New Music Makers	Thurs 7.30pm Methodist Church Light Music Show songs 02380 454285
Perform	Fri 4 & 5pm Turnpike Pavilion Drama, Dance, Sing (Age 4-7's) enquiries@perform.org.uk 0207 2559120
Performing Arts Company (YOUTH)	Youth Drama (14-30) Sun & Mon HEYCA 01489 690140
Rock Choir	Wednesday Eve Wildern School Main Hall Everyone Welcome 01252 714276
Sally Johnson Dance Academy	Drummond Community Centre Ballet, Tap, Modern 02380 255415
Serious Shapes Company	Thurs eve The d@rt Centre Adult Dance Classes 07851 285860
Simply Singers Community Choir	Thur Eve Turnpike Pavilion sandrafreeman51@yahoo.co.uk 02380 554544
Wellstead Community Choir	Mon 7.30pm Salvation Army Community Church 01489 798681
West End Singers	Wed 7.30pm 2000 Centre Mixed Voice Choir 02380 404881 www.westendsingers.co.uk

WHAT'S ON GUIDE

COMMUNITY CLUBS

1st Hedge End Boys' Brigade	Methodist Church Boys 4+ 01489 7837791 1st Hedge
End Girls' Brigade	Methodist Church Girls 4+ 02380 696222 info@hedgeendgb.org.uk
31st Itchen North Scout Group	Beavers, Cubs, Scouts, Explorers https://amazonseascouts.org.uk
Bingo	Wed 1.30-3.30pm (Tickets 1.15pm) Drummond Centre 'Good Companions SC' 01489 780251
Breath Easy Hedge End	Fri 2-3pm Underhill Centre COPD Sufferers Grp 02380 403339
Friends Unlimited	8pm, 1st & 3rd Wed Monthly Shamblehurst Barn www.friends-unlimited.org.uk
Girl Guiding Rainbows Brownies Guides Rangers (Itchen Valley Division) to join, visit:	www.girlguiding.org.uk
Hamble Valley U3A	2nd Tues Mon, 2pm St Luke's Church, Shamblehurst www.u3asites.org.uk/hamblevalley
Hedge End Rotary	Meet Tuesdays Botley Park Hotel, Winchester Rd 0844 879 9034
Hedge End Carnival Committee	Help always needed info@hedgeendcarnival.org.uk 01489 785041
Hedge End Horticultural Society	Meets 3rd Mon monthly 7.30pm 2000 Centre Large Hall 01489 784823
Macular Disease Society	Central Vision Loss Support United Reformed Church 01264 321963
Over 60s' Club	Mon 1pm-3.30pm 2000 Centre New members welcome 07818 802 241
Pop in Cafe	Wed 10.30am - 12 noon Methodist Church Tea, Coffee, Chat & Booksale Just pop in!
Retirement Club	Tue 1pm - 3.30pm 2000 Centre Cards Bingo 01489 790552
St John Ambulance Badgers	Wed Eve Salvation Army C'mty Centre, Dowd's Farm All ages 07827 883439
Women's Institute	4th Tues Monthly 7.30pm 2000 Centre Crafts Walking 01962 852721

SPORT CLUBS

GOJU RYU Karate	Weekly classes Village Hall All Ages & Abilities www.hsgk.co.uk 01489 782038
Flexercise	Over 50's Keep Fit Wed 11.15am-12.15pm Village Hall 01489 781616
Hedge End Bowling Club	Woodhouse Lane New members always welcome 01489 783690
Hedge End Indoor Bowls Club	Wed 2-4pm, 7.30-9.30pm Sun 7.30-9.30pm Village Hall Join Us!
Hedge End Junior Cricket Club	Teams for Under 9s & Under 15s Girls & Boys chairman@hejcc.co.uk
Hedge End Ranger FC	League football for all ages Girls & Boys Rodaway Pavilion 07876 037653
Pilates	Mon (10-11am), 2000 Centre Fri (11am-12pm) Village Hall All levels & abilities 07967 631739
Paula's Zumba / 'Fitsteps'	Thurs 6.30pm (Fitsteps) 7.30pm (Zumba) 2000 Centre 07731320440
Steady & Strong Classes	2000 Centre Posture, Mobility & Confidence 01962 846605
Table Tennis Club (Seniors)	Thurs 2-4pm 2000 Centre, Large Hall Beginners Welcome 01489 788237
Table Tennis (Over 60s)	Tue 10am -12 noon Underhill Centre, St Johns Church £2 01489 784985
UECHI RYU Karate	Mon & Thurs 8pm HEYCA 16+ All abilities mail@uechi-ryu.org.uk 07970 684017



FEATURE YOUR LOCAL BUSINESS HERE!

SPACE LIMITED

TO FIND OUT MORE EMAIL
MARKETING@HEDGEEND-TC.GOV.UK



HEDGE END TENNIS COURTS

BOOK WOODHOUSE LANE TENNIS COURTS ONLINE, IT'S EASY!

[HTTPS://CLUBSPARK.LTA.ORG.UK/WOODHOUSELANEREcreationPARK](https://clubspark.lta.org.uk/woodhouselanerecreationpark)

HEDGE-END
TOWN COUNCIL

FIND YOUR SPACE FOR YOGA

Monthly
restorative yoga,
private & corporate
classes available

****First Class Free****

w: www.staceysteelyoga.com
e: stacey@staceysteelyoga.com
f: [staceysteelyoga](https://www.facebook.com/staceysteelyoga)
t: 07504 537948

Hedge End Classes

Tuesdays - 20:10 - 21:10
Drop-in Hatha Flow
Centre 2000

Fridays - 09:30 - 10:30
Drop-in Hatha Flow
Turnpike Pavilion

#PARKSPORT19

SPORthealthEBC

PARK SPORT EASTLEIGH

ACTIVITIES
FOR 8-16
YEAR OLDS

29 JULY -
23 AUGUST

£1 PER
SESSION

ONE DAY
FESTIVALS

Book online
from 8 July:
eastleigh.gov.uk/parksport

FREE
SWIMMING
SKATE JAMS

SUPPORTED BY:

EASTLEIGH
BOROUGH COUNCIL

Sport
Works

HILLCREST
STRUCTURAL LTD

Holiday Activities at the d.@rt centre

All of our Holiday Activities are suitable for boys and girls aged 4-12 daily with our Teen Tuesdays for 11-16 year olds.

£17 a day for main activity from 10am till 3pm

£22 a day for all cookery days from 10am till 3pm

If you need a little extra child care time we offer wrap around care from 9am till 10am or from 3pm till 5pm £3 an hour per day.

Summer Holiday Activities

Join us for 5 exciting weeks of arty crafty fun!

Watch our website for details of what is on each day. Wednesdays are dedicated to cookery, all other days to arts and crafts using different media.

Week 1
29th
July

The Mystery of the Blue Room

29th July - 2nd August

If you enjoy escape room style puzzles, code breaking and problem solving, this is the week for you.

Week 4
19th
Aug

We are going on a Safari

19th August - 23rd August

Where shall we go? How will we get there? What will we see? What will we eat?

Week 2
5th
Aug

Into the Jurassic

5th August - 9th August

We are going Dinosaur crazy in our Jurassic week exploring the creatures that lived way back then.

Week 5
27th
Aug

Around the World

27th August - 30th August

We will be cruising around the world looking at the artwork of different cultures and countries.

Week 3
12th
Aug

To the Moon!

12th August - 16th August

Lets celebrate the anniversary of the first landing on the moon and get creative, imagining what a holiday on the moon might look like.

Teen Tuesdays in the Summer Holidays

Our Teen Tuesday's are all cookery based this time round!! Get your chef hats on and join us in cooking up some tasty treats.

All ingredients are included in the price of £22, be sure to bring a container

Tuesday 30th July
Tuesday 6th August
Tuesday 13th August
Tuesday 20th August
Tuesday 27th August

Mexican Enchiladas
Vegetable Curry with Pea and Lamb Samosas
Summer Party Cake
Risotto and Tiramisu
Roast Chicken Pie with Glazed Carrots

To book, call us on 01489 779 471 or email community@wildern.org

LOCAL SERVICES

LOCAL SERVICES

The Berry Theatre, Wildern Lane	02380 652333
The Community Hub (Youth Centre), Wildern Lane	01489 780440
Citizens Advice Bureau (Outreach Service), Salvation Army Community Church, 85 Whites Way	03444 111 306
The D@rt Centre (Arts), Wildern Lane	01489 779471
Hampshire Constabulary	101
Hedge End Household Waste Recycling Centre, Shamblehurst Lane	01489 795499
Hedge End Library, 11 Upper Northam Rd	0300 555 1387
Hedge End Post Office, St Johns Centre, Upper Northam Rd	01489 782066
Jobcentre Plus, Eastleigh Capital House, 100 Southampton Road, SO50 5PB	0800 169 0190
Skyline Gold Radio 102.5FM, St John's Rd	01489 799000
TADIC (Teenage Drop-in, Wednesday 3-6pm), 28 Lower Northam Rd (tadic@btinternet.com)	07879 761660
Tennis Bowls Putting Green, Pavilion Rd (Apr-Sep)	01489 780440
Wildern Leisure Centre, Wildern Lane	01489 787128

SCHOOLS

Hampshire Education Authority	01962 869611
Berrywood Primary School, Maunsell Way	01489 780068
Freegrounds Infants School, Hobb Lane	01489 782075
Freegrounds Junior School, Hobb Lane	01489 782295
Kings Copse Primary School, Kings Copse Ave	01489 785040
Shamblehurst Primary School, Wildern Lane	01489 782342
Wellstead Primary School, Wellstead Way	01489 799351
Wildern Secondary School, Wildern Lane	01489 783473

HEALTH

St Luke's Surgery, St Lukes Close	01489 783422
The Medical Centre, 24-26 Lower Northam Rd	01489 785722
Hedge End Dental Surgery (NHS), Saracen House, Freegrounds Avenue	01489 790661

PLACES OF WORSHIP

Hedge End Baptist Church, 72A Upper Northam Rd	01489 786260
Hedge End Methodist Church, 42 St John's Rd	02380 739328
Hedge End United Reformed Church, St Johns Rd	01489 787408
Kings Community Church, Upper Northam Close	01489 784333
Our Lady of the Assumption Catholic Church, 3 Freegrounds Rd	02380 449088
St John's The Evangelist Church (C of E), St Johns Rd	01489 790048
St Luke's Church, St Luke's Close	01489 781448
The Salvation Army Community Church, Wellstead Way	01489 798681

COMMUNITY HALLS FOR HIRE

2000 Centre (Large & Small Hall), St Johns Rd (HETC)	01489 780440
Drummond Community Centre, Drummond Rd, Grange Park (HETC)	01489 780440
Norman Rodaway Pavilion, Heathhouse Lane (HETC)	01489 780440
Turnpike Pavilion, Turnpike Way (HETC)	01489 780440
Hedge End Village Hall, St Johns Rd	01489 784962
Hedge End Youth & Community Association Halls (Old School House), St Johns Rd	01489 780440
Methodist Church Hall, St Johns Rd	01489 784823
Underhill Centre, St Johns Rd	01489 790048
United Reformed Church Hall, St Johns Rd	01489 787408

CONTACTS AND COMMITTEES



OFFICE OPENING HOURS

Monday - Thursday: **8.30am - 5pm**
Friday: **8.30am - 4.30pm**

Saturday, Sunday & Bank Holidays: **Closed**

Contact Us: Town Clerk Sarah Jelley

Email: Townclerk@hedgeend-tc.gov.uk

General: Commsofficer@hedgeend-tc.gov.uk

Gazette Enquiries: Marketing@hedgeend-tc.gov.uk

Phone: **01489 780440**

Website: www.Hedgeend-tc.gov.uk

HEDGE END TOWN COUNCIL

2000 CENTRE,
ST Johns Road,
Hedge End,
Southampton,
Hampshire,
SO30 4AF



TOWN COUNCIL COMMITTEE MEETINGS

All committee meetings are held at the Town Council Office. All meetings are formal, yet friendly and members of the public are encouraged to attend and take part. All meetings begin promptly at 7pm, with the exception of the third Wednesday Highways & Planning Meeting, which starts at 6.45pm, followed by Full Council which starts at 7.30pm.

Policy & Resources - First Tuesday monthly

Recreation & Amenities - Second Wednesday monthly

Highways & Planning - First Wednesday & Third Wednesday monthly

Full Council - Third Wednesday monthly

(Please note that the Highways and Planning Committee meeting for the third Wednesday will determine planning applications only; followed by Full Council)

2019	JULY	AUGUST	SEPTEMBER	OCTOBER
POLICY & RESOURCES	2nd	N/M*	3rd	1st
RECREATION & AMENITIES	10th	N/M*	11th	9th
HIGHWAYS & PLANNING	3rd & 17th	N/M*	4th & 18th	2nd & 16th
FULL COUNCIL	17th	N/M*	18th	16th

N/M* No Meeting



Find us on
Facebook



@HedgeEndTown



/Hedge End Town Council



Join Us!

We welcome your ideas
& feedback at meetings.