

# GAZETTE

Summer Edition 2017 | Issue 67 | Hedge End Town Council

[www.hedgeend-tc.gov.uk](http://www.hedgeend-tc.gov.uk)

Find us on...



**The Hedge End  
FOOD CENTRE**

**Greta Park  
Red Oak**

**Grange  
Park's  
Volunteer  
Litter  
Picker**

**Hedge End  
Breakfast  
Rotary Club  
Afternoon  
Tea Party**

**Woodhouse Lane  
Tennis Coaching**

**Conservation  
Volunteers**

**Hedge End  
WHIST CLUB**

**& more...**

**Community News | Council News | Carnival News  
What's On Guide | Local Services | Events**



# **Hedge End Town Councillors (email: [firstname.lastname@hedgeend-tc.gov.uk](mailto:firstname.lastname@hedgeend-tc.gov.uk))**

Freegrounds	Grange Park East	Grange Park West	St Johns	St Helens	Shamblehurst	Wildern
						
<b>Margaret Allingham</b> 01489 798646	<b>Ian Corben</b> 07561 343858	<b>Stephen Carr</b> 07811 452236	<b>Stephanie Arnold</b> 07713 131085	<b>Paul Carnell</b> 01489 785216	<b>Connor Burgess</b> 07468 288630	<b>Georgina Jenks</b> 07547 181003
						
<b>Helen Corben</b> 01489 692406	<b>Derek Pretty</b> 01489 797213	<b>Cynthia Garton</b> 01489 797213	<b>Jerry Hall</b> 07762 612044	<b>Lucy Jurd</b> 07730 072606	<b>Keith House</b> 07768 357918	<b>John Jupe</b> 01489 780293
						
<b>Shankerlal Sthankiya</b> 01489 690139	<b>Ben Thomas</b> 01489 790701	<b>Bruce Tennent</b> 02380 470518	<b>Jane Welsh</b> 01489 784962	<b>Christopher Yates</b> 07881021165	<b>James Mitchell</b> 0800 316 3435	<b>Cliff Morris</b> 07848 946822

**Chair: Margaret Allingham | Vice Chair: Ian Corben**

# A Note From...

## The Town Clerk's Desk

**I've heard on the grapevine that we can expect a sizzling summer. The dreary washouts or miserable weather we have seen in previous years could be banished. So, we are odds-on for a barbecue summer say all the long-range forecast predictions...**

Indeed, as I write this editorial, the temperature is very pleasant outside and this may well be the forerunner for the super weather! Temperatures across Hedge End are likely to be warmer than average and rainfall near or below average for the whole three months from June to August. Well, seeing is believing! We have been promised this in previous years and it has never come to fruition.

Temperatures above 30 degrees Celsius! Sun blazing down from a blue sky. The colour of the sky reminiscent of the blue ink you fill your fountain pen with! Lazy, hazy hot afternoons spent in the garden sipping a nice cold drink. Just the type of pick-me-up we all need and some crave for. A bit of summer sun is medically proven to make us all feel better and brings a smile to our faces and instils good humour amongst us. All these musings are, of course, based on the assumption that the Met Office are right in their predictions.

A good summer would certainly be great news for Hedge End. It is a well-known fact that excellent weather always encourages more visitors to come and stay in and around Hedge End. I believe that if the weather forecast is for an exceptionally hot summer, then Hedge End really is the desired location for providing a perfect setting with the many opportunities our town can provide.

There is no doubt that sunlight makes us feel restored, positive and happier because sunlight affects our mood. It has a neurochemical effect, stimulating the production of endorphins, that impacts on our temperament. Recently, I took my lunchtime constitutional stroll down to the village centre (village or town? - No, that's a debate for another day!) on a beautiful sunny day. I distinctly noticed how many people had cheery, smiling faces

compared to a rainy day or a dank, dismal or overcast type of day. The effect is heightened if we perceive other people to be happy and cheerful as this often impacts on other people and we become more sociable and positive.

So, fingers crossed for the promise of a long, hot summer and let's enjoy the best Hedge End has to offer.

We always welcome contributions from the public for possible inclusion in future Gazette publications, so do please keep them coming in.

I hope you have a lovely Summer and get a chance to enjoy the promised hot sunshine and I'll see you again in the Autumn.

See you soon!

Kevin



### TURNPIKE PAVILION



### PRESCHOOL OPPORTUNITY?

**A rare opportunity for a preschool business at Turnpike Pavilion, Turnpike Way, Hedge End.**

- \* Fully Equipped Kitchen
- \* Outside Play Area

Hours Negotiable  
Current Rate £13.40 p/h +VAT

Please send your business plan to  
[townclerk@hedgeend-tc.gov.uk](mailto:townclerk@hedgeend-tc.gov.uk)  
or Phone: 01489 780440



# Council News

## Chair's Report | Committee Reports

### OUTGOING CHAIR'S REPORT

It only seems like yesterday that I accepted the honourable position of Chair of Hedge End Town Council and now, here I am writing a review of what I have undertaken in the past year.

I want to take this opportunity of thanking all my colleagues on the Town Council for their support this year, which I have very much appreciated. In addition, I must thank the office staff who have been helpful and have offered guidance, which has been gratefully received.

One of my most memorable events that I attended was the official opening of the newly refurbished play area at Greta Park. This popular facility was officially opened in October 2016 and the Chairman of our Recreation and Amenities Committee, Jane Welsh and I inspected the play equipment and even tested the equipment!



Not long after, it was a privilege to be asked to attend an event to unveil a specially commissioned plaque commemorating Muhammad Ali's visit to Hedge End in 1971 as part of Black History Month. It was an interesting and well-attended event.

2016 was rounded off by the very popular Hedge End Christmas Lights annual event. It was pleasing to see so many people attend and I was proud to be a part of this.

In the spring 2017, I was invited to attend a superb performance of Great Expectations by the Maskers Theatre Company at The Berry Theatre. The production of this classic book by Dickens was a very interesting interpretation which was thoroughly enjoyable.

I wish the new Chair, Cllr Margaret Allingham, a successful year ahead.

**Cllr Paul Carnell**  
[paul.carnell@hedgeend-tc.gov.uk](mailto:paul.carnell@hedgeend-tc.gov.uk)

### RECREATION & AMENITIES REPORT

As summer is now fast approaching, our ground staff are being kept extremely busy, maintaining our parks and grass areas up to a high standard.

Our Paddling Pool should be open by the time of this report, so let's hope the children have a wonderful time this year with lots of family days out at the pool. We have also placed a seat by the table tennis area for spectators, as this is becoming a very popular facility all year round.

Wildern Nature Reserve balancing pond requires conservation works to maintain the ecological and environmental significance of this site. We hope that a working programme will commence soon, in order that the issues can be resolved.

It was requested by the allotment holders to have additional taps at White and Z plots and this has been implemented.

Unfortunately, our beautiful Red Oak at our Library entrance, which has been a landmark for many years, has been identified to have fungal disease by 3 independent and qualified Arboricultural Specialists. The Town Council has been advised to undertake immediate remedial action in the interest of public safety.

The Bowling Green is open. So, if you fancy a game of bowls, you can make casual bookings through our office. You can also join the Bowling Club [www.hebc.moonfruit.com](http://www.hebc.moonfruit.com) where I am sure they would love to see you.

The Green Flag inspection of our cemetery was conducted on a beautiful sunny day when the grounds gave an excellent impression. Hopefully, we shall come out with flying colours and (excuse the pun) a new Green Flag flying for the ensuing year! Let's hope we have a lovely summer ahead!

**Cllr Jane Welsh - Committee Chair**  
[jane.welsh@hedgeend-tc.gov.uk](mailto:jane.welsh@hedgeend-tc.gov.uk)

# Council News

## Greta Park Red Oak

### GRETA PARK RED OAK

#### History

This tree has a significant presence on the local street scene, because of its size and form it could be said that it is a landmark for the local community.

The Red Oak is located on the southern edge of the site adjacent to Upper Northam Road. It grows within a small area of grass which in turn is surrounded by a car-park, access road, basketball court, footpaths and the Library.



The Red Oak situated at the entrance to Greta Park

Due to the access, facilities adjacent to this tree and the proximity to the centre of Hedge End, there are often many pedestrians and drivers within the immediate vicinity of the tree.

Unfortunately, there are no records available to indicate when the tree was planted, however, the main entrance to Greta Park and the tree's location is likely to have, at least, dated to the late 1930's.

#### Red Oak (*Quercus Rubra*)

The Red Oak is a non-native species and takes up to 20 years before it is ready to flower and a further 20 before they produce a good crop of acorns. It can grow to a height of 25m. It was introduced to the UK and is grown as an ornamental tree in parks and gardens, where it is prized for its incredible autumn colour. Red Oak was extensively used as a forest tree in Europe in the 19<sup>th</sup> Century and in Britain after 1920. It requires full light and lots of space. Red Oak is not as valuable to native wildlife as English and sessile oaks, but its catkins provide

pollen for bees and other insects in spring and its acorns are eaten by birds and small mammals. The rounded crown provides nesting opportunities for birds. It is less susceptible to pests and pathogens than our native English and sessile oaks, although it may be susceptible to oak processionary moth.

#### Circumstances for Removal

It is with much regret that circumstances have forced the Town Council to take drastic action in the interest of public safety. Sadly, the Red Oak has been affected by three fungal fruiting bodies, all are considered to be *Ganoderma resinaceum*, a significant decay fungi specialising in root and basal decay of its hosts. The largest of these is located on the southernmost aspect of the tree at ground level, the other smaller fungal brackets on the northern and north eastern aspects of the tree at ground level.

An obvious lack of bark growth is evident above the larger bracket, resulting in a depression compared to the rest of the stem, to the left of this there is a significant rib of reactive growth which is present from ground level to the main union. This is indicative of the tree responding to a possible structural weakness within the stem. There is also evidence indicating a cavity or area of tissues with little or no structural integrity.

In conclusion, the most likely outcome for this tree, if action is not taken further, is catastrophic root or stem failure.

The Town Council has taken the view that given the current state and evidence, the tree has a limited future and the only course of action is to apply for planning consent for its removal and replace with a suitably large tree which will lessen the visual impact of the tree loss. In this respect, allowing the public an opportunity to comment.

**Denise Lowth - Deputy Town Clerk**  
[deputytc@hedgeend-tc.gov.uk](mailto:deputytc@hedgeend-tc.gov.uk)



# Community News

## Annual Parish Assembly | Hedge End Whist Club

### ANNUAL PARISH ASSEMBLY

Thank you to everyone who attended the Annual Parish Assembly on Monday 3 April. Members of the

public came along to hear reports from local County, Borough and Town Councillors, as well as local groups including the Youth Service and Kings Community Church. The meeting finished with the annual award giving for both the Serving the Community Awards and the Allotment Awards.

**The Serving the Community Award was won, this year, by Heather Jones** who was nominated for both her volunteering work with the Hedge End Horticultural Society and her volunteering work within the Hedge End allotment community.

Vera Blunt was also recognised for the many years she has dedicated to volunteering her time to various local clubs and organisations in Hedge End.

**The Young Person Serving the Community Award was won by Joshua Buckle** who was nominated for his ongoing work with the HEWEB Youth Council for which he is an active member and has played an important role in encouraging others to have a voice, be active and participate.

Charlotte Murphy was also recognised for her work with the 25th Itchen North Cub Pack for her commitment and dedication to the local community, raising the profile of scouts and young people in the area.

Helga Wiegler was presented with the allotment award for 'Best Cultivated Plot - Kanes Field' and Jane Best was awarded the 'Best Cultivated Plot - Spring Field'. Certificates of Recommendation were awarded to Philip Ravenscroft, John Blake, Jacqueline Hickman, Leighton Moat, Nicholas Gladwell, James Stanley, Mr & Mrs Barfoot, Debbie Harvey, Veronica Ciampa and Denise Pollock.



Annual Parish Assembly 2017

### HEDGE END WHIST CLUB



Hedge End Whist Club - Play begins...

**The Hedge End Whist Club meets every Tuesday afternoon between 1pm - 3.30pm in the large hall at the 2000 Centre, St Johns Rd, Hedge End, SO30 4AF. Whist followed by tea / coffee, biscuits, sometimes cakes....**

**After refreshments, there are 3 games of BINGO! (optional of course)**

We are a very friendly social club with approximately 40 members. Not everyone attends every week due to other commitments.

**We are always looking for new members to join our sociable and happy atmosphere...**

Books are donated to the club, which members can purchase and exchange for a small fee. This also includes jigsaws when available. All proceeds go into the club funds.

If you live locally and either have transport or mobility issues, then the One Community bus may be available to use for a small charge.

**One of our active members, Ruby Pearce will be celebrating her 100<sup>th</sup> birthday on the 4<sup>th</sup> July this year. Members' ages range from under 60 yrs to 100 yrs...**



Ruby Pearce (front centre) with club friends



# Community News

## Volunteer Litter Picker in Grange Park

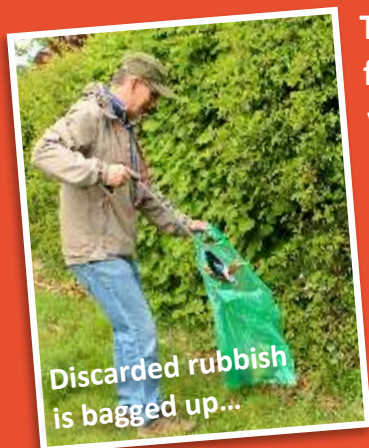
### GRANGE PARK 'GOOD CITIZEN' PICKS UP DISCARDED RUBBISH IN NEIGHBOURHOOD

When local dog walker, Steve, saw an increase in litter around the footpaths and bridle paths of Grange Park, where he regularly walks, he decided to do something practical. Steve bought himself a £5 litter picker from Amazon and has set about going out once a fortnight, for up to an hour, to pick up easy to access litter around the pathways where he walks.



Steve gets busy...

Steve said "It was a choice - either of being filled with anger in perpetuity, or, of doing something about it myself. I know I am only scratching the surface, but it makes me feel better when I then take my dog walking on a path which I have recently cleared. I would not expect anybody else to go to the lengths I have (although it would be great if they did), but, if more people just picked up casually dropped litter and put it in the nearest bin, I feel sure it would make a big difference..."



Discarded rubbish is bagged up...

The main items Steve finds include a wide variety of discarded glass, plastic, tin and paper drink containers; crisp and sweet wrappers; used and unused dog poo bags...

Steve added "We are really lucky to have so many lovely footpaths around Grange Park and it seems a shame to allow them to become full of rubbish. I am sure I am not alone in getting annoyed at the level of litter, or in picking it up, but I would like to encourage as many local people as possible to take some personal action.....Of course it would be even better if people made sure they used bins in the first place!"

Thank you Steve for sharing your story and inspiring us with your voluntary litter picking in Grange Park.



If you have a volunteering story that you would like to share, perhaps you also do a bit of litter picking in your area, please get in touch...

email: [infoassistant@hedgeend-tc.gov.uk](mailto:infoassistant@hedgeend-tc.gov.uk)  
or Phone: 01489 780440

### ALWAYS ON HAND

One Community's new emergency wristband service provides peace of mind for when you are out and about

For further details of our exciting new initiative please contact Luby or Dill at the Lifeline Office on 023 8090 2416/7 | Web: [1community.org.uk](http://1community.org.uk)

Registered charity number 1052978 Registered in England as a company limited by guarantee

Registered number 3132524

Registered office 16 Romsey Road, Eastleigh SO50 9AL





# Carnival News

## Hedge End Carnival - Saturday 1 July 2017

Your carnival goes international this year, when the band of **NARREN-OBBER-LIGA** makes the long journey from Kornwestheim, Germany to perform exclusively for you...



Continental bands are quite different from our own. Make sure that you are there to enjoy the experience because this is something really special. Give them a big welcome to Hedge End!



Making a return visit will be **THE NEW MALE MAJORETTES** that you enjoyed so much a couple of years ago. Add in regulars such as the **BIG NOISE SAMBA BAND** and we have set up the carnival, now it is over to you.

What makes carnival so special is that **YOU** can take part. In fact, it is nothing without people getting involved. You do not need a big lorry, just a costume and a smile, the optional theme for 2017 is **ROALD DAHL** giving you plenty of wonderful characters for inspiration. The entry form is on the website:



[www.hedgeendcarnival.org.uk](http://www.hedgeendcarnival.org.uk)

The arrangements for the procession will be slightly different from most years because of the recent works on The Recreation Ground. The procession will be assembled in St John's Road which will be closed to through traffic from 11.30am. If you usually use St John's Road at this time, please do not make your diversion via Pretoria or Granada roads, they are not suitable.

If you are just planning on being a spectator, make sure that you bring plenty of money for the street collection and do not forget to applaud the entries as they make their way past...



All the money you give has to go to good causes in Hedge End, legally we cannot use a single penny of the collection to go towards the £2,000 + that it costs to stage the procession, that is why we need you to come to the Gala Show on carnival day, buy plenty of draw tickets and support the smaller events during Carnival Week.

There will be lots of attractions on offer at the **GALA SHOW** such as the **FLOWER MARQUEE**, music from **FUNKY FLUTE CLUB**, Romanian dance group **FIDANKI**. There will be a bar on site again this year. One of the main attractions at the Gala Show will be **THE WESSEX COMMUNITY CIRCUS**. As announced in the previous edition of the Gazette, Trethowan's Solicitors have generously sponsored this attraction and we also have received donations towards the cost of Big Noise Samba Band from Leader's Estate Agents and Fidanki Romanian Dancers from Harris Bathrooms. We give a big thank you to our new sponsors who join our regular supporters such as Richmond's Estate Agents, The Hedge End & Botley Courier and Southern Communications.

### **CARNIVAL DRAW TICKETS ARE NOW AVAILABLE...**

Our ticket selling stand will be in the village centre on Saturdays prior to the carnival. We have used some of the donation we received when the Carnival Court cut the ribbon to declare Costa Coffee open to provide big cash prizes.

If you belong to an organisation that could make good use of money you are welcome to apply for a donation from carnival funds. The application form is on the website and must be submitted by July 20<sup>th</sup>. If you do make a request, we expect you to



# Community News

## Hedge End Carnival | Lloyds Give & Gain Day

support the carnival and help us raise the money. Other events in **CARNIVAL WEEK** are a **QUIZ NIGHT** on Monday 26 June, **WHIST DRIVE** on Tuesday 27 (afternoon) and on Tuesday evening, the **SCAVENGER HUNT** will take place in the village centre. Having been cancelled last year because of bad weather, the **DOG SHOW** returns to Greta Park on Wednesday 28 June at 6pm and the **CHILDREN'S SPORTS** get under way at 6.30pm. On Thursday 29 June, the regular bingo session becomes **CARNIVAL BINGO**.

**THE FUN FAIR WILL BE OPEN FROM WEDNESDAY 28 JUNE THROUGH TILL MONDAY 3 JULY...**

More information is in the carnival programme provided by Richmond's and delivered through your door with the June edition of your Hedge End & Botley Courier. If you missed your copy, download one from the carnival website where you should be able to find all the information that you need to make the most of your carnival.



**Carnavalesco**

### LLOYDS BANK 'GIVE & GAIN DAY' VOLUNTEERS HELP OUT IN HEDGE END

On Friday 19th May 2017, Lloyds Banking Group (LBG) Southern Independent Audit team once again dusted off their trowels, hoes and loppers, stepping

outside the office with their green fingers in order to help out Shamblehurst Primary School in Hedge End in aid of Give & Gain Day. Give & Gain is a LBG programme that allows employees to give back something to the local community and the team could think of nothing more rewarding than giving some time to the local school children and helping revitalise the front garden area with new plants, flowers and sunflowers.



Vicky Hart, Senior Audit Manager who was leading the team, said; *"We decided to return to the same local school as last year to continue the work we started with our local community. The school was very grateful for our time in 2016 and welcomed the opportunity for us to return and work on a different part of their school. This year the children will each be planting Sunflower seeds, with some parents also volunteering on the day to assist with planting new flowers in the front area of the school."*

Armed with nothing but some old tools and a bucket of will power, the Volunteers put into action a day that saw children from the school spend time with the Team, learning about the plants and flowers being introduced. The contributions from Dave Gardener who supplied the Sunflower Seeds, Parents, LBG and Homebase Hedge End were very much appreciated and helped make the day a great success, without their generous donations this project would not have been possible. The whole team worked tirelessly all day to ensure all the required areas were cleared and replanted.

Vicky Hart, spoke of how important it is to assist in the local community: *"This was a fantastic chance for the team to give something back to a local school and hopefully, leave a lasting legacy that the children can both enjoy and learn from. At the moment, for the school, there isn't time and money for this. The team had a wonderful and productive day and would like to say a big thank you to all the staff and children at the school for being so welcoming and encouraging."*



LBG volunteers plant flowers at Shamblehurst Primary School



# Community News

## Hamble Valley Rotary | Shafford Meadows Carving

### HAMBLE VALLEY ROTARY DONATE TO WELLBEING SERVICE FOR YOUNG PEOPLE

**Hamble Valley Rotary generously donates to the Young People's Wellbeing Service (which includes Teenage Drop-in Centre, Hedge End and Eastleigh Youth Counselling Service)**

Despite delivering a service for young people, that I have designed and run for 21 years, I can still be shocked. But this time it's not about what young people tell me they're getting up to, it's because year after year organisations raise funds to help the services which support young people. The people that raise these funds are older, wiser and further removed than our clients, yet continue to celebrate the unique service we provide for the young people. Hamble Valley Rotary have supported us with their advice and wisdom as well as cash funds for the whole 21 years that we've existed.

Today, Aline Blampied and Dr Robin Marsh from Hamble Valley Rotary (covering Botley, Curdrige, Durley, West End and Boorley Green) dropped into the clinic - run from the Hedge End Medical Centre on Wednesday afternoons - and brought a cheque from the proceeds of their well-loved carol float last Christmas. They were challenged by our astute receptionist perhaps they were a little old for our services!!

Earlier in the year, Botley Church also gave us a substantial cheque too!



Aline Blampied & Dr Robin Marsh of Hamble Valley Rotary present cheque to Dr Ruth Padday

After they left, the loyal band of voluntary trustees arrived to meet to manage the service. Once again, the depth of concern and understanding of challenges we are continually facing in providing contraception and sexual health advice (in Hedge End and Hamble) as well as counselling (in Eastleigh and Southern Parishes) and sex and relationship education in schools (Wildern and Hamble) was realised.

**Dr Ruth Padday - Hedge End Medical Centre**

### SHAFFORD MEADOWS OAK TREE CARVING

Hedge End, West End & Botley Local Area Committee provided funding to commission Richard Austin, a local wood carver and designer to produce an eye-catching piece of artwork that has been well received by local residents.

Following the death of a lovely old Oak tree at Shafford Meadows in Hedge End, the stump has been



carved into a unique design that reflects Hedge End's history.

When an old tree dies, it is important to retain stumps and deadwood whenever it is safe to do so. They can provide a superb habitat and are also a wonderful ecological resource.



Shafford Meadows Oak Tree Carving



# Community News

## HEBRC Tea Party | Conservation Volunteers

### HEDGE END ROTARY CLUB OLDER RESIDENTS' AFTERNOON TEA PARTY



On the lovely sunny Sunday afternoon of April 9th, many of the older residents of Hedge End were able to experience a flavour of "a life on the ocean waves" when they were entertained by cruise singer Ryan Bishop and looked after by waiters and waitresses at the Hedge End Breakfast Rotary Club afternoon tea party.

The ladies certainly fitted the bill in their lovely summer clothes and the gentlemen looked very smart as usual, so together with the beautiful weather, it felt just like the Mediterranean.

Everyone was greeted with a glass of wine or a soft drink and shown to their table where members of the Rotary Club served them with tea, sandwiches, cakes, scones and ice cream.



Afternoon Tea Party

Ryan Bishop entertained us with a wide variety of songs and our guests were in fine voice as they joined in with the singing.

Rotary President, Elizabeth Carter, welcomed everyone and thanked Ryan for the excellent entertainment. Thanks were also due to all the Rotarians and supporters who had worked so hard to make this event such a success with all their help in the kitchen, serving tea, with transport and in many other ways.

The club was also grateful to local businesses Tesco, The Co-op and Botley Park Hotel for their generous contributions and to the Post Office and the Gazette for their help in publicising the event.

All agreed that it had been a very enjoyable afternoon and we look forward to next years event.

**Like to know more about Hedge End Rotary Club?  
Please call David Baynes 01489 690126.**

### CONSERVATION VOLUNTEERS

Thank you to the Conservation Volunteers who have offered their time to meet with our Head Groundsman, Paul Snelgrove and spend a morning, once a month on conservation projects around Hedge End.



So far this year, the volunteers have been busy litter picking at Dowd's Farm Park as well as pond

clearance work at Merlin Gardens. The work at Merlin Gardens included the thinning of willow trees to increase the light through to the pond and



woodland floor, as well as pruning and cutting back across the whole site.

Previous work in 2016, included the removal of a vigorous weed from the pond at Wildern Meadow. As you can see from this photo



taken in April 2017, this has been extremely successful and the water is now much clearer, allowing more oxygen to be absorbed into the water and improving the health of the pond for its many inhabitants.

**Interested in becoming a Conservation Volunteer? Call 01489 780440 or email: [reception@hedgeend-tc.gov.uk](mailto:reception@hedgeend-tc.gov.uk)**

# Community News

## The Hedge End Food Centre

### THE HEDGE END FOOD CENTRE

The Hedge End Food Centre has now been open since the beginning of June 2013 and serves the community in Hedge End, Botley, West End and the local area.

It is based at Kings Community Church and is well supported by local people, churches, stores, organisations and councils. The Food Centre currently opens every Monday and Thursday from 10am until 1.30pm.

We have collection points in several locations around the area: KCC, Hedge End and West End Council Offices, Hedge End Co-Op, All Saints' Botley, St. Peter's Curdridge and Holy Cross Durley.

We are also supported by the Hedge End M&S store who, through the Neighbourly community group, are donating their surplus food to us on a regular basis.

During the Harvest time in the autumn 2016, we were generously given the produce from various local churches and many local primary schools. This really helps to boost our food stocks and we were able to give out fresh food as well, to our clients, who are not usually able to buy this type of produce and it was well-received.

A new idea this Christmas saw a number of families and churches creating a "reverse advent calendar". As well as receiving a gift every day during advent, a gift of food was donated to the Food Centre. This is a great way to remember those who are not able to afford the little extras that many of us enjoy at Christmas time.

Since the beginning of 2016, we have supplied on average a weeks' worth of food to 11 households a week amounting to over 1,700 people and the need appears to be growing.

We have a large number of referral agencies that are in contact with the community, ranging from Doctors Surgeries, School Support workers, Housing Associations, Council Officers and Churches.



Referrals come to us either by vouchers or by a phone call on a designated mobile phone. We try to signpost people to other agencies like CAP

(Christians Against Poverty) for debt counselling, Citizens Advice Bureau (CAB) for advice or other advisory services in the area, as appropriate.

We see many adults who are struggling due to the changes in their benefits, some are experiencing long term sickness and many are in need due to family breakdowns.

Our heart and aim is to practically show the love of Christ to those who are in need, whatever their story.

For more information please email us at:

[foodcentre@kccsouthampton.org](mailto:foodcentre@kccsouthampton.org)

we would love to hear from you.

**The Hedge End Food Centre Team**



### 160th ANNIVERSARY OF METHODISM IN HEDGE END 1857 TO 2017

#### Hedge End Methodist Church

**Saturday 24th June 2017 2pm to 5pm**

We invite members of the local community to come and join us for hot or soft drinks and some cake as we celebrate the 160th Anniversary of Methodism in Hedge End.

We would particularly welcome anyone who has visited the church building in the past. Whether they have attended church services, our Sunday School, the Brigades or any organisation that meets, or has met in the building. If you wish to share your stories, that would be good.

**Hedge End Methodist Church, St Johns Road,  
Hedge End. S030 4AG.**





# TENNIS COACHING

at **WOODHOUSE LANE**



Hedge End Town Council has teamed up with JG Tennis to give you tennis lessons

Find the right coaching session for you and your family on the 3 refurbished courts at Woodhouse Lane, Hedge End

Coaching's available for every age, just book online and join us on court

Next Steps... Find the right session and book online, or simply drop us an email to find out which one is right for you

Give us a call 07902 124323

Email: [joshgook@jgtennis.co.uk](mailto:joshgook@jgtennis.co.uk)

Book your session online at

[Tennisatwoodhouselane.com](http://Tennisatwoodhouselane.com)



DAY	TIME	SESSION
Tuesday	5-5.45pm	Tiny Tots (Age 2-5)
Tuesday	5-6pm	Mini Red (Tennis for kids Age 5-8)
Tuesday	6-7pm	Mini Orange (Age 8-9)
Tuesday	6-7pm	Mini Green/ Teens (Age 10-16)
Tuesday	7-8pm	Tennis Tuesday (Age 16+)
Tuesday	7-8pm	Advantage (Age 16+)
Thursday	5-5.45pm	Tiny Tots (2-5)
Thursday	5-6pm	Mini Red (Age 5-8)
Thursday	6-7pm	Mini Orange (Age 8-9)
Thursday	6-7pm	Mini Green/ Teens (Age 10-16)
Thursday	7-8pm	Touchtennis (All Ages)
Sunday	9-10am	Mini Red /Orange (Age 5-9)
Sunday	10-11am	Mini Green/ Teens (Age 10-16)

[Tennisatwoodhouselane.com](http://Tennisatwoodhouselane.com)



# What's On Guide

<b>1ST HEDGE END BOYS' BRIGADE</b>	Methodist Church   Boys 4+   01489 783779
<b>1ST HEDGE END GIRLS' BRIGADE</b>	Methodist Church   Girls 4+   02380 696222   <a href="mailto:info@hedgeendgb.org.uk">info@hedgeendgb.org.uk</a>
<b>31ST ITCHEN NORTH SCOUT GROUP</b>	Beavers, Cubs, Scouts, Explorers   <a href="http://amazonseascouts.org">amazonseascouts.org</a>
<b>ART &amp; CRAFT CLUB</b>	Tue 1.30-3.30pm   Village Hall   Outings   Demos   01489 798233
<b>BINGO</b>	Wed 1.30-3.30pm (Tickets 1.15pm) Drummond Centre   'Good Companions SC'   01489 780251
<b>BREATHE EASY HEDGE END</b>	Fri 2-3pm   Underhill Centre   COPD Sufferers Grp   02380 403339
<b>CALLIGRAPHY</b>	Wed 1.15-3.15pm   2000 Centre   Beginners welcome   email: <a href="mailto:mary.noble@btinternet.com">mary.noble@btinternet.com</a>
<b>CHEER-A-CALITY</b>	Cheerleading squad   Wed   Salvation Army Community Centre   Ages 4-16   07736320103
<b>CRAFTY SATURDAYS</b>	Saturday Mornings   The d.art Centre   All ages & abilities   01489 779471
<b>DANCE JUNKIE</b>	Mon Eve   Dart Centre   Street Dance Classes   All ages & abilities   01489 779471
<b>FLOWER CLUB</b>	1st Tues, Monthly 7pm   2000 Centre   Demos   Workshops   01489 783115
<b>FRIENDS UNLIMITED</b>	8pm, 1st & 3rd Wed monthly   Social Group   Shamblehurst Barn   <a href="http://www.friends-unlimited.org.uk">www.friends-unlimited.org.uk</a>
<b>GIRL GUIDING</b>	Rainbows   Brownies   Guides - email the 'Join Us' Co-ordinator: <a href="mailto:guiding@hotmail.co.uk">guiding@hotmail.co.uk</a>
<b>GLEE CLUB</b>	Mon 7.15-8.45pm   Drummond Centre   Singers- All Ages & Abilities   07810 127351
<b>GOJU RYU KARATE</b>	Weekly classes   Village Hall   All Ages & Abilities   <a href="http://www.hsgk.co.uk">www.hsgk.co.uk</a>   01489 782038
<b>HAMBLE VALLEY U3A</b>	2nd Tues Monthly, 2pm   Hedge End Club   <a href="http://www.u3asites.org.uk/hamblevalley">www.u3asites.org.uk/hamblevalley</a>
<b>HAMBLE VALLEY BRASS</b>	Mon 7.45-9.20pm   Community Band   Dart Centre, Wildern Lane   07929 061068
<b>HEDGE END BOWLING CLUB</b>	Woodhouse Lane   New members always welcome   01489 783690
<b>HEDGE END BREAKFAST ROTARY CLUB</b>	Meet Tuesday   Botley Park Hotel, Winchester Rd   0844 879 9034
<b>HEDGE END CARNIVAL COMMITTEE</b>	Help always needed   <a href="mailto:info@hedgeendcarnival.org.uk">info@hedgeendcarnival.org.uk</a>   01489 785041
<b>HEDGE END HORTICULTURAL SOCIETY</b>	Meets 3rd Monday monthly 7.30pm   2000 Centre Large Hall   01489 784823
<b>HEDGE END INDOOR BOWLS CLUB</b>	Wed 2-4pm, 7.30-9.30pm   Sun 7.30-9.30pm   Village Hall   Join Us!
<b>HEDGE END JUNIOR CRICKET CLUB</b>	Teams for Under 9s & Under 15s   Girls & Boys   <a href="mailto:chairman@hejcc.co.uk">chairman@hejcc.co.uk</a>
<b>HEDGE END RANGERS FC</b>	League football for all ages   Girls & Boys   Rodaway Pavilion   07876 037653
<b>JAMZ DANCE</b>	Zumba, Street & Toddler Classes   Hedge End Club   <a href="http://www.jamzdance.co.uk">www.jamzdance.co.uk</a>   07929 095405
<b>LINE DANCING</b>	Line dancing classes Fri 10-11am   HEYCA   All Levels & Abilites   07967631739
<b>MACULAR DISEASE SOCIETY</b>	Central Vision Loss Support   United Reformed Church   01264 321963
<b>NEW MUSIC MAKERS</b>	Thurs 7.30pm   Methodist Church   Light Music   Show songs   02380 454285
<b>OVER 60'S CLUB</b>	Mon 1pm-3.30pm   2000 Centre   New members welcome   07818 802 241
<b>POP IN CAFE</b>	Wed 10.30am - 12 noon   Methodist Church   Tea, Coffee, Chat & Booksale   Just pop in!
<b>PILATES</b>	Mon (Am), 2000 Centre   Fri (11am-12pm) HEYCA   All levels & abilities   07967 631739
<b>PERFORMING ARTS COMPANY (YOUTH)</b>	Youth Drama (14-30)   Sun & Mon   HEYCA   01489 690140
<b>PAULA'S ZUMBA / 'FITSTEPS'</b>	Thurs 6.30pm (Fitsteps) 7.30pm( Zumba)   2000 Centre   07731320440
<b>RETIREMENT CLUB</b>	Tue 1pm - 3.30pm   2000 Centre   Cards   Bingo   01489 790552
<b>SALLY JOHNSON DANCE ACADEMY</b>	Drummond Community Centre   Ballet, Tap, Modern   02380 255415
<b>ST JOHN AMBULANCE BADGERS</b>	Wed Eve   Salvation Army Cmty Centre, Dowds Farm   All ages   07827 883439
<b>ST JOHN'S CAFE</b>	1st & 3rd Friday, monthly, 10-12 noon   Tea/ Coffee/ Cakes & Chat   01489 790048
<b>SERIOUS SHAPES DANCE COMPANY</b>	Thurs eve   Dart Centre   Adult Dance Classes   07851 285860
<b>STEADY &amp; STRONG CLASSES</b>	2000 Centre   Posture, Mobility & Confidence   01962 846605
<b>TABLE TENNIS CLUB (SENIORS)</b>	Thurs 2-4pm   2000 Centre, Large Hall   Beginners Welcome   01489 781088
<b>UECHI RYU KARATE</b>	Mon & Thurs 8pm   HEYCA   16+ All abilities   07970 684017   <a href="mailto:mail@uechi-ryu.org.uk">mail@uechi-ryu.org.uk</a>
<b>WELLSTEAD COMMUNITY CHOIR</b>	Mon 7.30pm   Salvation Army Community Church   01489 798681
<b>WEST END CARNIVAL SHOW BAND</b>	Tue Eve   Hedge End Village Hall   07851 013322   <a href="mailto:info@wecsband.co.uk">info@wecsband.co.uk</a>





# Local Services

## LOCAL SERVICES

The Berry Theatre , Wildern Lane	02380 652333
The Community Hub (Youth Centre), Wildern Lane	01489 789638
Citizens Advice Bureau (Outreach Service), Salvation Army Community Church, 85 Whites Way	03444 111 306
The D@rt Centre (Arts), Wildern Lane	01489 779471
Hampshire Constabulary	101
Hedge End Household Waste Recycling Centre, Shamblehurst Lane	01489 795499
Hedge End Library, 11 Upper Northam Rd	0300 555 1387
Hedge End Post Office, St Johns Centre, Upper Northam Rd	01489 782066
Skyline Gold Radio 102.5FM, St John's Rd	01489 799000
TADIC (Teenage Drop-in, Wednesday 3-6pm), 28 Lower Northam Rd	07879 761660
Tennis   Bowls   Putting Green, Pavilion Rd (Apr-Sep)	01489 780440
Wildern Leisure Centre, Wildern Lane	01489 787128

## SCHOOLS

Hampshire Education Authority	01962 869611
Berrywood Primary School, Maunsell Way	01489 780068
Freegrounds Infants School, Hobb Lane	01489 782075
Freegrounds Junior School, Hobb Lane	01489 782295
Kings Copse Primary School, Kings Copse Ave	01489 785040
Shamblehurst Primary School , Wildern Lane	01489 782342
Wellstead Primary School, Wellstead Way	01489 799351
Wildern Secondary School, Wildern Lane	01489 783473

## HEALTH

St Luke's Surgery, St Lukes Close	01489 783422
The Medical Centre, 24-26 Lower Northam Rd	01489 785722
Hedge End Dental Surgery (NHS), Saracen House, Freegrounds Avenue	01489 790661

## PLACES OF WORSHIP

Hedge End Baptist Church, 72A Upper Northam Rd	01489 786260
Hedge End Methodist Church, 42 St John's Rd	02380 739328
Hedge End United Reformed Church , St Johns Rd	01489 787408
Kings Community Church, Upper Northam Close	01489 784333
Our Lady of the Assumption Catholic Church, 3 Freegrounds Rd	02380 449088
St John's The Evangelist Church (C of E), St Johns Rd	01489 790048
St Luke's Church, St Luke's Close	01489 781448
The Salvation Army Community Church, Wellstead Way	01489 798681

## COMMUNITY HALLS FOR HIRE

2000 Centre (Large & Small Hall), St Johns Rd (HETC)	01489 780440
Drummond Community Centre, Drummond Rd, Grange Park (HETC)	01489 780440
Norman Rodaway Pavilion, Heathhouse Lane ( HETC)	01489 780440
Turnpike Pavilion, Turnpike Way (HETC)	01489 780440
Hedge End Village Hall, St Johns Rd	01489 784962
Hedge End Youth & Community Association Halls (Old School House), St Johns Rd	01489 690140
Methodist Church Hall, St Johns Rd	01489 784823
Underhill Centre, St Johns Rd	01489 790048
United Reformed Church Hall, St Johns Rd	01489 787408

# Hedge End Town Council

## Contacts & Committees

### Hedge End Town Council

2000 Centre  
St Johns Road  
Hedge End  
Southampton  
Hampshire  
SO30 4AF

**Town Clerk:** Kevin Glyn-Davies BA (Hons) PGDip

**Email:** [townclerk@hedgeend-tc.gov.uk](mailto:townclerk@hedgeend-tc.gov.uk)

**Deputy Town Clerk:** Denise Lowth

**Email:** [deputytc@hedgeend-tc.gov.uk](mailto:deputytc@hedgeend-tc.gov.uk)

**General email:** [reception@hedgeend-tc.gov.uk](mailto:reception@hedgeend-tc.gov.uk)

**Phone:** 01489 780440

**Fax:** 01489 799984

**Web:** [www.hedgeend-tc.gov.uk](http://www.hedgeend-tc.gov.uk)

## TOWN COUNCIL COMMITTEE MEETINGS

All committee meetings are held at the Town Council Office. All meetings are formal, yet friendly and members of the public are encouraged to attend and take part. All meetings begin promptly at 7pm, with the exception of the third Wednesday Highways & Planning Meeting, which starts at 6.45pm, followed by Full Council which starts at 7.30pm.

**Recreation & Amenities - Second Wednesday monthly**

**Finance & Administration - First Tuesday monthly**

**Highways & Planning - First Wednesday & Third Wednesday monthly**

**Full Council - Third Wednesday monthly**

**Community and Culture - Second Tuesday monthly**

(Please note that the Highways and Planning Committee meeting for the third Wednesday will determine planning applications only; followed by Full Council)

2017	Finance	Community & Culture	Recreation & Amenities	Highways & Planning	Full Council
June	No Meeting	13	14	No Meeting & 21	21
July	4	11	12	5 & 19	19
August	Please note: Council meetings will not be held during August				
Sept	5	12	13	6 & 20	20

**Deadline for contributions to the  
Summer Gazette - Friday 18 August 2017**